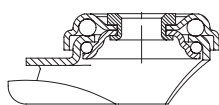
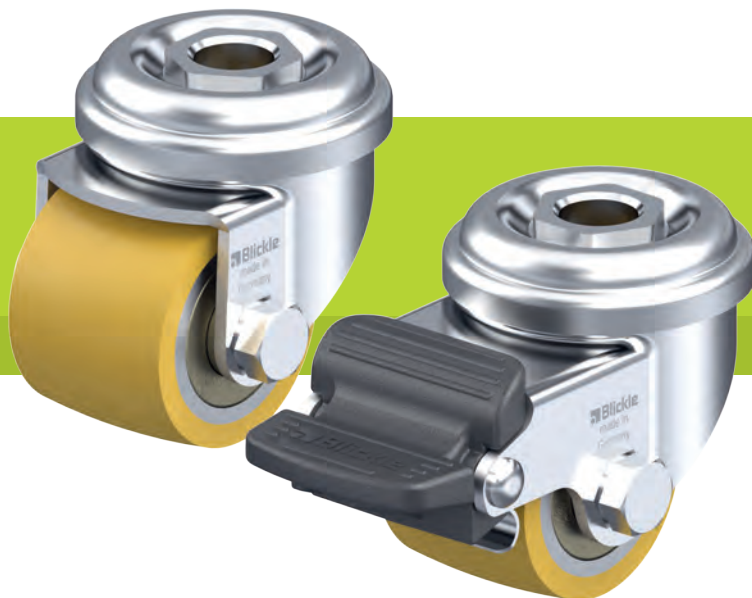


Pressed steel compact castors with bolt hole

75–350 kg



- Bracket:** LRA, LKRA, LER, LR, LKR series
- pressed steel, zinc-plated, blue-passivated, Cr6-free
 - double ball bearing in the swivel head
 - minimum swivel head play and smooth rolling characteristic and increased service life due to the special dynamic Blickle riveting process
 - bracket overview:
 - LRA series page 86
 - LKRA series page 86
 - LER series page 91
 - LR series page 91
 - LKR series page 92
 - brakes: page 112–113



- Wheel:** POEV series
- tyre: high-quality elastic solid rubber “Blickle EasyRoll” in smooth rolling quality, hardness 65 Shore A, colour black
 - wheel centre: high-quality nylon 6, impact resistant, colour black
 - detailed description: page 63, 212



- Wheel:** VSTH series
- tread: high-quality polyurethane elastomer Blickle Extrathane®, hardness 92 Shore A, colour light brown, non-marking, non-staining
 - wheel centre: steel
 - detailed description: page 66, 286



- Wheel:** POA series
- high-quality nylon 6, impact resistant, hardness 70 Shore D, colour black
 - detailed description: page 61, 143



- Wheel:** PO series
- high-quality nylon 6, impact resistant, hardness 70 Shore D, colour natural white
 - detailed description: page 69, 343



- Wheel:** GSPO series
- high-quality cast nylon, reaction-injected, impact resistant, hardness 80 Shore D, colour natural beige
 - detailed description: page 70, 368

12

Swivel castors	Swivel castors with “Radstop” brake	Wheel Ø [mm]	Wheel width [mm]	Load capacity at 3 km/h [kg]	Bearing type	Total height [mm]	Plate Ø [mm]	Bolt hole Ø [mm]	Offset swivel castor [mm]
LRA series									
LRA-POA 35G	LRA-POA 35G-RA	35	25	75	plain bore	50	43	11	15
LRA-VSTH 35K	LRA-VSTH 35K-RA	35	27	100	ball bearing	50	43	11	15
LRA-GSPO 35K	LRA-GSPO 35K-RA	35	28	100 *	ball bearing	50	43	11	15
LKRA series									
LKRA-POA 52G	LKRA-POA 52G-RA	50	29	120	plain bore	70	57	13	29
LKRA-GSPO 50K	LKRA-GSPO 50K-RA	50	32	150 *	ball bearing	70	57	13	29
LKRA-VSTH 50K	LKRA-VSTH 50K-RA	50	33	150	ball bearing	70	57	13	29
LER series									
LER-PO 60G	LER-PO 60G-RA	60	29	150	plain bore	80	70	13	35
LER-PO 60KF	LER-PO 60KF-RA	60	32	150	ball bearing (C)	80	70	13	35
LER-POEV 60KF	LER-POEV 60KF-RA	60	34	120	ball bearing (CC)	80	70	13	35
LR series									
LR-GSPO 60K	LR-GSPO 60K-RA	60	32	250 *	ball bearing	80	70	13	35
LR-VSTH 60K	LR-VSTH 60K-RA	60	35	200	ball bearing	80	70	13	35
LKR series									
LKR-GSPO 65K		65	40	350 *	ball bearing	88	88	13	41
LKR-VSTH 65K		65	40	250	ball bearing	88	88	13	41

* Test in compliance with DIN 12530 with extended breaks to avoid thermal overloading