

LS-G, BS-G series

Welded steel heavy-duty castors, heavy-duty swivel head, with cast iron wheel

750–1,400 kg

Bracket: LS/BS series

- particularly robust welded steel construction, zinc-plated, yellow-passivated, Cr6-free

Swivel bracket:

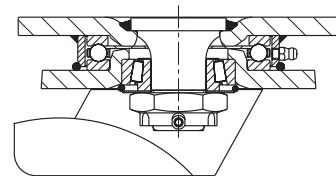
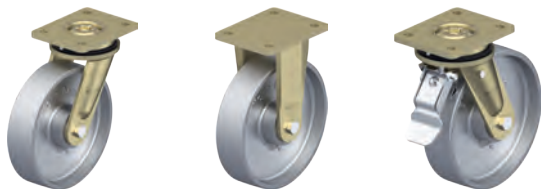
- axial grooved ball bearing ISO 104 and tapered roller bearing ISO 355 in the swivel head
- bolted and secured welded central kingpin, extremely strong
- dust and splash-proof
- grease nipple

Wheel: G series

- rugged grey cast iron, hardness 180–220 HB, grease nipple, lacquered, colour silver

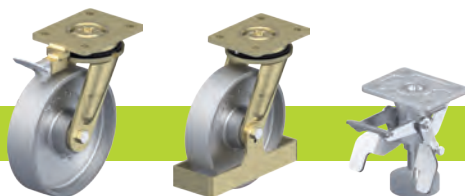
Additional details:

- bracket series: page 94
- brakes: page 112–113
- wheel series: page 376
- bearing types: page 84–85



Swivel castors	Fixed castors	Swivel castor with "stop-top" brake	Wheel Ø [mm]	Wheel width [mm]	Load capacity [kg]	Bearing type	Total height [mm]	Plate size [mm]	Bolt hole spacing [mm]	Bolt hole Ø [mm]	Offset swivel castor [mm]
LS-G 127G	BS-G 127G	LS-G 127G-ST	125	50	750	plain bore	170	140 x 110	105 x 75–80	11	50
LS-G 127K	BS-G 127K	LS-G 127K-ST	125	50	750	ball bearing	170	140 x 110	105 x 75–80	11	50
LS-G 150G	BS-G 150G	LS-G 150G-ST	150	50	900	plain bore	200	140 x 110	105 x 75–80	11	55
LS-G 150K	BS-G 150K	LS-G 150K-ST	150	50	900	ball bearing	200	140 x 110	105 x 75–80	11	55
LS-G 200G	BS-G 200G	LS-G 200G-ST	200	50	1,100	plain bore	245	140 x 110	105 x 75–80	11	60
LS-G 200K	BS-G 200K	LS-G 200K-ST	200	50	1,100	ball bearing	245	140 x 110	105 x 75–80	11	60
LS-G 250G	BS-G 250G	LS-G 250G-ST	250	60	1,400	plain bore	305	175 x 140	140 x 105	14	75
LS-G 250K	BS-G 250K	LS-G 250K-ST	250	60	1,400	ball bearing	305	175 x 140	140 x 105	14	75

Versions / options



	with directional lock 4 x 90°	with steel foot guard	truck lock
Technical description page	115	116	114
Product code suffix	-RI4	-FS	FF 125 / 150 / 200
Available for	all	all	wheel Ø 125–200 mm