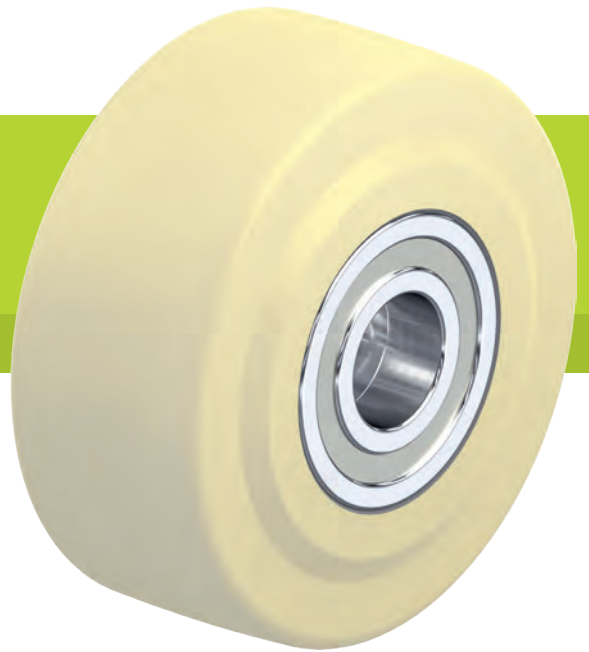


GSPO series

Heavy-duty cast nylon wheels



100–50,000 kg

Tread and tyre hardness

80 Shore D

Smooth operation / floor preservation

satisfactory

Rolling resistance

excellent

Wear resistance

very good

Wheel:

- high-quality cast nylon, reaction-injected, impact resistant, hardness 80 Shore D
- extremely high load capacity
- excellent rolling and swivel resistance
- easy operation on smooth surfaces
- high abrasion resistance
- colour natural beige

Other features:

- high chemical resistance to many aggressive substances
- reduced moisture absorption
- operating temperature: -20 °C to +80 °C, reduced load capacity over +35 °C
- consider the surface pressure on sensitive floors due to high point loads

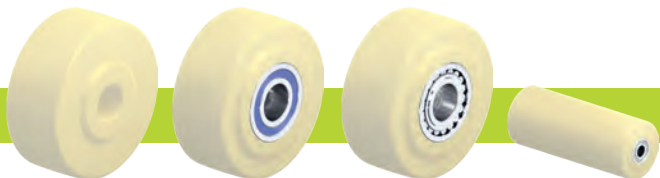
Additional details:

- wheel series: page 70
- tread: page 57
- bearing types: page 84–85
- chemical resistance: page 51

Wheels	Wheel Ø (D) [mm]	Wheel width (T2) [mm]	Load capacity [kg]	Bearing type	Axle bore Ø (d) [mm]	Hub length (T1) [mm]
GSPO 35/8K	35	28	100 *	ball bearing	8	28
GSPO 50/15K	50	32	250 *	ball bearing	15	35
GSPO 60/15K	60	32	350 *	ball bearing	15	35
GSPO 65/15K	65	40	650 *	ball bearing	15	45
GSPO 80/20K	80	40	1,000 *	ball bearing	20	45
GSPO 100/20K	100	40	1,250 *	ball bearing	20	45
GSPO 101/25K	100	55	1,500 *	ball bearing	25	60
GSPO 125/25K	125	55	2,000 *	ball bearing	25	60
GSPO 150/30K	150	55	2,500 *	ball bearing	30	60
GSPO 152/35K	150	80	3,000 *	ball bearing	35	90
GSPO 200/35K	200	55	3,000 *	ball bearing	35	60
GSPO 202/45K	200	80	4,500 *	ball bearing	45	90
GSPO 250/45K	250	65	5,000 *	ball bearing	45	70
GSPO 252/50K	250	80	6,000 *	ball bearing	50	90
GSPO 300/55K	300	80	7,000 *	ball bearing	55	90
GSPO 302/70K	300	110	10,000 *	ball bearing	70	120
GSPO 400/80K	400	110	12,000 *	ball bearing	80	120
GSPO 500/100K	500	130	18,000 *	ball bearing	100	130
GSPO 600/100PR	600	150	22,000 *	spherical roller bearing	100	170
GSPO 700/130PR	700	200	30,000 *	spherical roller bearing	130	220
GSPO 1000/160PR	1,000	250	50,000 *	spherical roller bearing	160	280

* Load capacity test in compliance with DIN 12532 with extended breaks to avoid thermal overloading
Other dimensions available upon request

Versions / options



	plain bore version	with stainless steel ball bearing in the wheel hub	with spherical roller bearing	other versions
Technical description page	84	84	85	
Product code suffix		-XK	-PR	
Available for	upon request	upon request**	upon request	upon request

** Some dimensions may result in reduced load capacities

