

## LS-GB, BS-GB series

### Welded steel heavy-duty castors, heavy-duty swivel head, wheel with Blickle Besthane® polyurethane tread

800–12,000 kg

**Bracket:** LS/BS series

- particularly robust welded steel construction, zinc-plated, yellow-passivated, Cr6-free
- Swivel bracket:
  - axial grooved ball bearing ISO 104 and tapered roller bearing ISO 355 in the swivel head
  - bolted and secured welded central kingpin, extremely strong
  - dust and splash-proof
  - grease nipple

**Wheel:** GB series

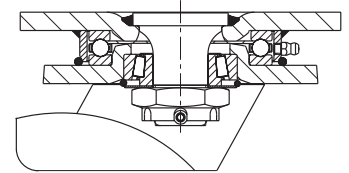
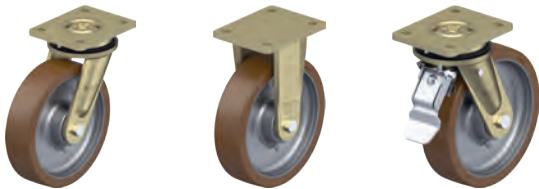
- tread: high-quality polyurethane elastomer Blickle Besthane®, hardness 92 Shore A, colour brown, non-marking, non-staining
- wheel centre: rugged grey cast iron, with grease nipple from wheel Ø 150 mm, lacquered, colour silver

**Additional details:**

- bracket series: page 94
- brakes: page 112–113
- wheel series: page 312–313
- bearing types: page 84–85



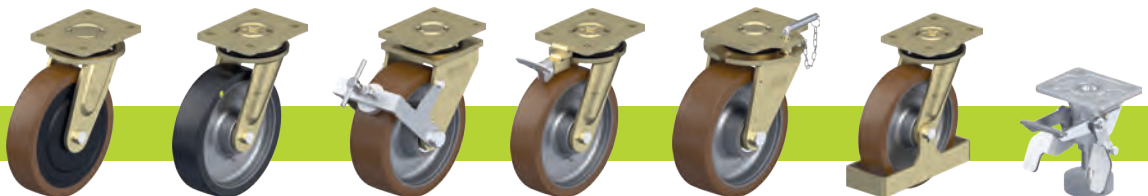
5



Swivel castors	Fixed castors	Swivel castor with "stop-top" brake	Wheel Ø [mm]	Wheel width [mm]	Load capacity [kg]	Bearing type	Total height [mm]	Plate size [mm]	Bolt hole spacing [mm]	Bolt hole Ø [mm]	Offset swivel castor [mm]
LS-GB 128K	BS-GB 128K	LS-GB 128K-ST	125	60	850	ball bearing	170	140 x 110	105 x 75–80	11	50
LS-GB 150K	BS-GB 150K	LS-GB 150K-ST	150	50	800	ball bearing	200	140 x 110	105 x 75–80	11	55
LS-GB 152K	BS-GB 152K	LS-GB 152K-ST	150	60	950	ball bearing	200	140 x 110	105 x 75–80	11	55
LS-GB 154K	BS-GB 154K	LS-GB 154K-ST	150	80	1,200	ball bearing	205	175 x 140	140 x 105	14	65
LS-GB 160K	BS-GB 160K	LS-GB 160K-ST	160	50	800	ball bearing	205	140 x 110	105 x 75–80	11	55
LS-GB 200K	BS-GB 200K	LS-GB 200K-ST	200	50	1,000	ball bearing	245	140 x 110	105 x 75–80	11	60
LS-GB 202K	BS-GB 202K	LS-GB 202K-ST	200	80	1,600	ball bearing	255	175 x 140	140 x 105	14	65
LS-GB 250K	BS-GB 250K	LS-GB 250K-ST	250	60	1,500	ball bearing	305	175 x 140	140 x 105	14	75
LS-GB 252K	BS-GB 252K	LS-GB 252K-ST	250	80	1,800	ball bearing	305	175 x 140	140 x 105	14	75
LS-GB 300K	BS-GB 300K	LS-GB 300K-ST	300	60	1,800	ball bearing	355	175 x 140	140 x 105	14	85
LS-GB 302K	BS-GB 302K	LS-GB 302K-ST	300	80	2,400	ball bearing	355	175 x 140	140 x 105	14	85
LS-GB 304K	BS-GB 304K	*	300	100	3,000	ball bearing	370	200 x 160	160 x 120	14	85
LS-GB 360K	BS-GB 360K	*	360	75	2,500	ball bearing	430	200 x 160	160 x 120	14	100
LS-GB 364K	BS-GB 364K	*	360	120	3,800	ball bearing	430	255 x 200	210 x 160	18	100
LS-GB 402K	BS-GB 402K	*	400	80	3,000	ball bearing	470	200 x 160	160 x 120	14	100
LS-GB 406K	BS-GB 406K	*	400	125	5,000	ball bearing	480	255 x 200	210 x 160	18	125
LS-GB 504K	BS-GB 504K	*	500	150	7,500	ball bearing	630	400 x 300	340 x 240	26	125
LS-GB 604K	BS-GB 604K	*	600	200	12,000	ball bearing	730	400 x 300	340 x 240	26	130

\* "Radstop" brake version

### Versions / options



	hydrolysis resistant, with cast nylon wheel centre	electrically conductive version, non-marking	with "Radstop" wheel brake	with directional lock 4 x 90°	with directional lock 4 x 90° (inserted by hand)	with steel foot guard	truck lock
Technical description page	56	50	113	115	115	116	114
Product code suffix	GSPOB series	-ELS	-RAH	-RI4	-RI4H	-FS	FF 125 / 150 / 160 / 200
Available for	upon request	up to wheel Ø 300 mm upon request	from wheel Ø 300x100 mm upon request	wheel Ø 125–300x80 mm	from wheel Ø 300x100 mm upon request	wheel Ø 125–250 mm	wheel Ø 125–200x50 mm