

## ALTH series

**Heavy-duty wheels**  
with **Blickle Extrathane®** polyurethane tread,  
with aluminium wheel centre

200–1,250 kg

**Tread and tyre hardness**

92 Shore A

**Smooth operation / floor preservation**

good

**Rolling resistance**

very good

**Wear resistance**

excellent



5

**Tread:**

- high-quality polyurethane elastomer Blickle Extrathane®, hardness 92 Shore A
- low rolling resistance
- high abrasion resistance
- high cut and tear propagation resistance
- colour light brown, non-marking, non-staining
- excellent chemical connection with the wheel centre

**Wheel centre:**

- die-cast aluminium

**Other features:**

- high chemical resistance to many aggressive substances
- operating temperature: -20 °C to +70 °C, temporarily up to +90 °C, reduced load capacity over +40 °C

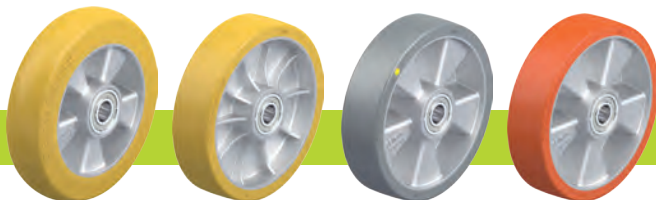
**Additional details:**

- wheel series: page 65
- tread: page 55
- bearing types: page 84–85
- chemical resistance: page 51

Wheels	Wheel Ø (D) [mm]	Wheel width (T2) [mm]	Load capacity at 4 km/h [kg]	Load capacity at 10 km/h [kg]	Bearing type	Axle bore Ø (d) [mm]	Hub length (T1) [mm]
ALTH 80/15K	80	30	200	–	ball bearing	15	35
ALTH 100/15K	100	40	350	–	ball bearing	15	45
ALTH 101/15K *	100	40	420	–	ball bearing	15	40
ALTH 101/15K-CO *	100	40	420	–	ball bearing	15	40
ALTH 125/15K	125	40	550	–	ball bearing	15	45
ALTH 125/15K-CO	125	40	550	–	ball bearing	15	45
ALTH 127/20K	125	54	750	370	ball bearing	20	60
ALTH 140/20K	140	54	800	400	ball bearing	20	60
ALTH 151/15K	150	40	400	200	ball bearing	15	60
ALTH 150/20K	150	50	650	320	ball bearing	20	60
ALTH 152/20K *	150	54	900	450	ball bearing	20	60
ALTH 160/20K	160	50	750	370	ball bearing	20	60
ALTH 160/20K-CO	160	50	750	300	ball bearing	20	60
ALTH 162/20K *	160	50	950	470	ball bearing	20	60
ALTH 180/20K	180	50	700	350	ball bearing	20	60
ALTH 200/20K	200	50	800	400	ball bearing	20	60
ALTH 200/20K-CO	200	50	800	320	ball bearing	20	60
ALTH 200/25K	200	50	800	400	ball bearing	25	60
ALTH 200/25K-CO	200	50	800	320	ball bearing	25	60
ALTH 202/20K *	200	50	1,000	500	ball bearing	20	60
ALTH 250/25K	250	60	1,000	500	ball bearing	25	70
ALTH 252/25K *	250	60	1,250	620	ball bearing	25	70

\* With heavy-duty wheel centre, reinforced design

### Versions / options



	version with extremely crowned tread	version with heavy duty wheel centre, reinforced design	antistatic version, non-marking grey	other shore hardnesses and special colours
Technical description page	55		50	
Product code suffix	<b>-CO</b>		<b>-AS</b>	
Available for			all with exception of wheel Ø 140 mm	upon request

