

## LER-POES, LKR-POES series

**Pressed steel castors with bolt hole,  
wheel with soft rubber tyres  
"Blickle SoftMotion"**

110–150 kg

**Bracket:** LER/LKR series

- LER: pressed steel, zinc-plated, blue-passivated, Cr6-free
- LKR: strong pressed steel, zinc-plated, blue-passivated, Cr6-free
- double ball bearing in the swivel head
- strong central kingpin
- minimum swivel head play and smooth rolling characteristic and increased service life due to the special dynamic Blickle riveting process

**Wheel:** POES series

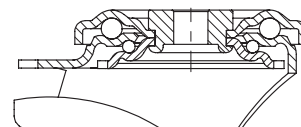
- tyre: high-quality elastic solid rubber "Blickle SoftMotion", hardness 55 Shore A, colour grey, non-marking
- wheel centre: high-quality nylon 6, impact resistant, colour black

**Additional details:**

- bracket series: page 91, 92
- brakes: page 112–113
- wheel series: page 209
- bearing types: page 84–85

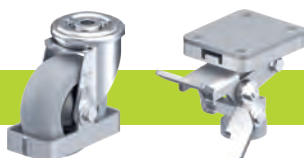


3



Swivel castors	Swivel castors with "stop-fix" brake	Wheel Ø [mm]	Wheel width [mm]	Load capacity [kg]	Bearing type	Total height [mm]	Plate Ø [mm]	Bolt hole Ø [mm]	Offset swivel castor [mm]
LKR-POES 80KF-SG	LKR-POES 80KF-FI-SG	80	40	110	ball bearing (C)	110	88	13	40
LER-POES 100KF-SG	LER-POES 100KF-FI-SG	100	40	150	ball bearing (C)	125	70	13	36
LER-POES 125KA-SG	LER-POES 125KA-FI-SG	125	40	150	ball bearing (C)	150	70	13	38

### Versions / options



	with steel foot guard	truck lock
Technical description page	116	114
Product code suffix	-FS	FF 100-1 / FF 125-1
Available for	upon request	wheel Ø 100+125 mm