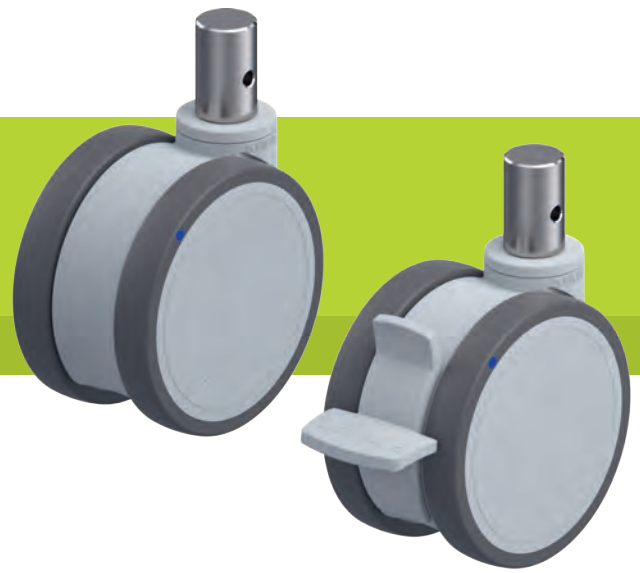


LKDGX-PATH series

Blickle MOVE twin synthetic castors, corrosion-resistant, with stem, colour silver grey, wheel with thermoplastic polyurethane tread



100–125 kg

-20 °C to +60 °C

Bracket: LKDGX series

- high-quality nylon 6, impact resistant
- two corrosion-resistant grooved ball bearings in swivel head sealed on both sides
- with stainless steel plug-in stem, bolted and secured
- colour silver grey RAL 7001
- all parts including axle material are corrosion-resistant
- modern, appealing design

Wheel: PATH series

- tread: high-quality thermoplastic polyurethane (TPU), hardness 94 Shore A, colour dark grey, non-marking, non-staining
- wheel centre: high-quality nylon 6, impact resistant, colour silver grey RAL 7001

Other features:

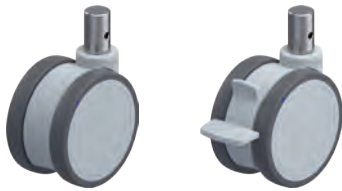
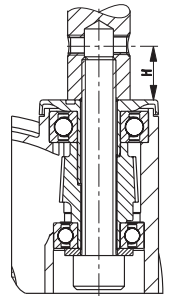
- the load capacity reduces at ambient temperatures above +30 °C

Additional details:

- bracket series: page 90
- brakes: page 112–113
- wheel series: page 61
- bearing types: page 84–85



2



Swivel castors	Swivel castors with "stop-fix" brake	Wheel Ø [mm]	Wheel width [mm]	Total castor width [mm]	Load capacity [kg]	Bearing type	Total height [mm]	Stem Ø [mm]	Stem length [mm]	Ø cross hole [mm]	Position cross hole (H) [mm]	Offset swivel castor [mm]
LKDGX-PATH 100XK-ZAX51	LKDGX-PATH 100XK-FI-ZAX51	100	2 x 18	80	100	ball bearing	103	18	62	M6	30	31
LKDGX-PATH 100XK-ZAX55	LKDGX-PATH 100XK-FI-ZAX55	100	2 x 18	80	100	ball bearing	103	22	45	M8	20	31
LKDGX-PATH 125XK-ZAX51	LKDGX-PATH 125XK-FI-ZAX51	125	2 x 20	80	125	ball bearing	130	18	62	M6	30	40
LKDGX-PATH 125XK-ZAX55	LKDGX-PATH 125XK-FI-ZAX55	125	2 x 20	80	125	ball bearing	130	22	45	M8	20	40

Swivel castor with "stop-fix" brake with easy release kick lever as standard

Versions / options



	electrically conductive version, non-marking	with combined wheel brake and directional lock (1 x 360°)	castor with special mounting height 121 / 135 mm	wheel Ø 150 mm	in special colour
Technical description page	50	115			
Product code suffix	-ELS	-RIFI	LKDGXH-...		
Available for	all	wheel Ø 125 mm	wheel Ø 100 / 125 mm	upon request	upon request