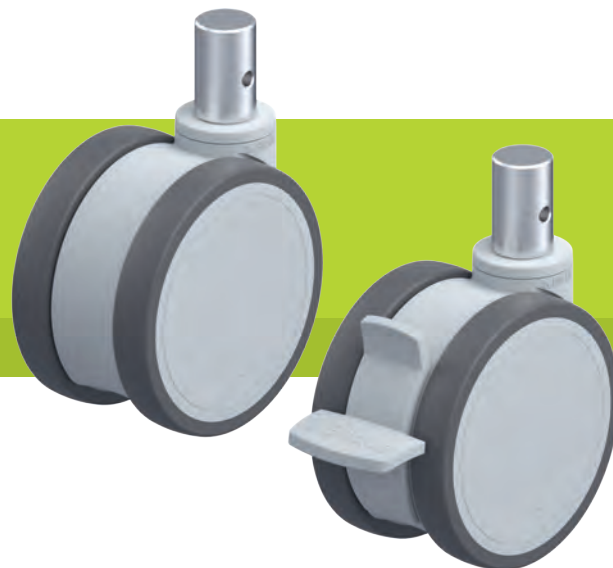


LKDG-PATH series

Blickle MOVE twin synthetic castors with stem, colour silver grey, wheel with thermoplastic polyurethane tread



100–125 kg

-20 °C to +60 °C

Bracket: LKDG series

- high-quality nylon 6, impact resistant
- two grooved ball bearings in the swivel head sealed on both sides
- zinc-plated, blue-passivated steel plug-in stem (Cr6-free), bolted and secured
- colour silver grey RAL 7001
- modern, appealing design

Wheel: PATH series

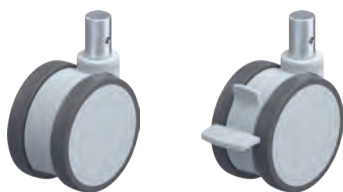
- tread: high-quality thermoplastic polyurethane (TPU), hardness 94 Shore A, colour dark grey, non-marking, non-staining
- wheel centre: high-quality nylon 6, impact resistant, colour silver grey RAL 7001

Other features:

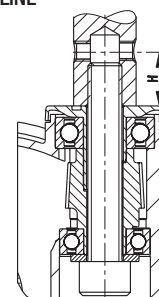
- the load capacity reduces at ambient temperatures above +30 °C

Additional details:

- bracket series: page 89
- brakes: page 112–113
- wheel series: page 61
- bearing types: page 84–85



BLICKLE DESIGN LINE



2

Swivel castors	Swivel castors with "stop-fix" brake	Wheel Ø [mm]	Wheel width [mm]	Total castor width [mm]	Load capacity [kg]	Bearing type	Total height [mm]	Stem Ø [mm]	Stem length [mm]	Ø cross hole [mm]	Position cross hole (H) [mm]	Offset swivel castor [mm]
LKDG-PATH 100K-ZA51	LKDG-PATH 100K-FI-ZA51	100	2 x 18	80	100	ball bearing	103	18	62	M6	30	31
LKDG-PATH 100K-ZA55	LKDG-PATH 100K-FI-ZA55	100	2 x 18	80	100	ball bearing	103	22	45	M8	20	31
LKDG-PATH 125K-ZA51	LKDG-PATH 125K-FI-ZA51	125	2 x 80	80	125	ball bearing	130	18	62	M6	30	40
LKDG-PATH 125K-ZA55	LKDG-PATH 125K-FI-ZA55	125	2 x 80	80	125	ball bearing	130	22	45	M8	20	40

For corrosion-resistant versions of twin synthetic castors, see page 179
Swivel castor with "stop-fix" brake with easy release kick lever as standard

Versions / options



	electrically conductive version, non-marking grey	with combined wheel brake and directional lock (1 x 360°)	castor with special mounting height 121 / 135 mm	wheel Ø 150 mm	in special colour
Technical description page	50	115			
Product code suffix	-ELS	-RIFI	LKDGH-...		
Available for	all	wheel Ø 125 mm	wheel Ø 100 / 125 mm	upon request	upon request