

## LKDG-PUA series

**Twin synthetic castors,  
colour light grey, wheels with  
thermoplastic polyurethane tread**



110 kg

-20 °C to +70 °C

**Bracket:** LKDG series

- high-quality nylon 6, impact resistant
- high-quality synthetic plain bore in the swivel head
- zinc-plated steel threaded pin
- colour light grey RAL 7035

**Wheel:** PUA series

- tread: high-quality thermoplastic polyurethane (TPU), hardness 92 Shore A, colour black, non-marking, non-staining
- wheel centre: high-quality nylon 6, impact resistant, colour light grey RAL 7035

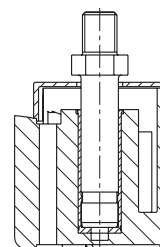
**Other features:**

- operating temperature: temporarily up to +80 °C
- the load capacity reduces at ambient temperatures above +30 °C

**Additional details:**

- bracket series: page 89
- brakes: page 112–113
- bearing types: page 84–85

**BLICKLE  
DESIGN LINE**



2



Swivel castors	Swivel castors with "Radstop" brake	Wheel Ø [mm]	Wheel width [mm]	Total castor width [mm]	Load capacity [kg]	Bearing type	Total height incl. hexagon [mm]	Threaded pin [mm]	Offset swivel castor [mm]
LKDG-PUA 100G	LKDG-PUA 100G-RA	100	2 x 19	63	110	plain bore	121	M12 x 20	33

### Versions / options



	with zinc-plated steel top plate fitting 60x60 mm 38x38/46x46 mm	corrosion-resistant version	in special colour
Technical description page	106		
Product code suffix	-P23		
Available for	all*	upon request	upon request

\* Total height +2 mm