

RTH, REV, RVU series

**Wheels for stackers,
drive and running wheels
for forklift trucks**



Wheel: RTH series

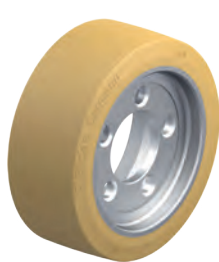
- tread: high-quality polyurethane elastomer Blickle Extrathane®, hardness 92 Shore A, low rolling resistance, high abrasion resistance, high cut and tear propagation resistance, colour light brown, non-marking, non-staining, excellent chemical connection with the wheel centre (see page 55 for a material description)
- wheel centre: rugged grey cast iron or ductile cast iron
- overview wheel series page 79

Wheel: REV series

- tyre: high-quality elastic solid rubber in drive-quality, hardness 70 Shore A, very good operational comfort, very good floor preservation, low-noise operation, colour black (see page 53 for a material description)
- wheel centre: rugged grey cast iron or ductile cast iron
- overview wheel series page 79

Wheel: RVU series

- tread: high-quality polyurethane elastomer Vulkollan®, hardness 92 Shore A, low rolling resistance, **high dynamic load capacity**, high abrasion resistance, high cut and tear propagation resistance, colour natural, non-marking, excellent chemical connection with the wheel centre (see page 56 for a material description)
- wheel centre: rugged grey cast iron or ductile cast iron
- overview wheel series page 80



Jungheinrich



Loc



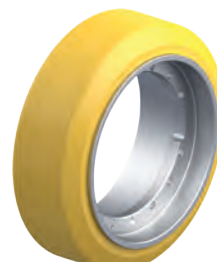
Mic



Mic

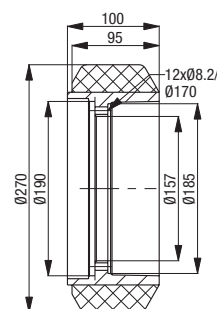
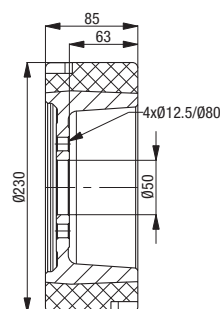
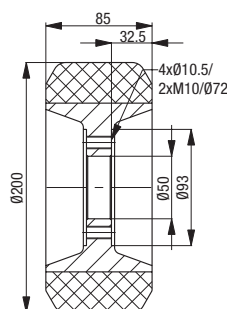
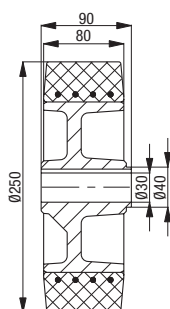
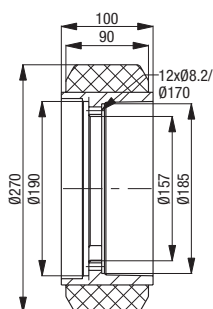
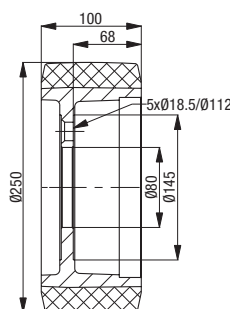


Mic



Mic

Suitable for manufacturer no.	Suitable for manufacturer no.	Suitable for manufacturer no.	Suitable for manufacturer no.	Suitable for manufacturer no.	Suitable for manufacturer no.
9903813	539134	28862	506318547	58259	200117240
Product code	Product code	Product code	Product code	Product code	Product code
RVU 250x100/80-5	RTH 270x90/157-12	REV 250x80/30-90-N	RTH 200x85/50-4+2	RTH 230x85/50-4-GL	RTH 270x95/157-12



Other dimensions available upon request