

RTH, RB, REV series

**Wheels for stackers,
drive and running wheels
for forklift trucks**



Wheel: RTH series

- tread: high-quality polyurethane elastomer Blickle Extrathane®, hardness 92 Shore A, low rolling resistance, high abrasion resistance, high cut and tear propagation resistance, colour light brown, non-marking, non-staining, excellent chemical connection with the wheel centre (see page 55 for a material description)
- wheel centre: rugged grey cast iron or ductile cast iron
- overview wheel series page 79

Wheel: RB series

- tread: high-quality polyurethane elastomer Blickle Besthane®, hardness 92 Shore A, very low rolling resistance, **high dynamic load capacity**, high abrasion resistance, high cut and tear propagation resistance, colour brown, non-marking, non-staining, excellent chemical connection with the wheel centre (see page 56 for a material description)
- wheel centre: rugged grey cast iron or ductile cast iron
- overview wheel series page 80

Wheel: REV series

- tyre: high-quality elastic solid rubber in drive-quality, hardness 70 Shore A, very good operational comfort, very good floor preservation, low-noise operation, colour black (see page 53 for a material description)
- wheel centre: rugged grey cast iron or ductile cast iron
- overview wheel series page 79



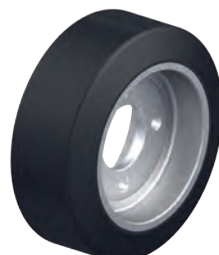
Fenwick-Linde



Fenwick-Linde



Fenwick-Linde



Fenwick-Linde

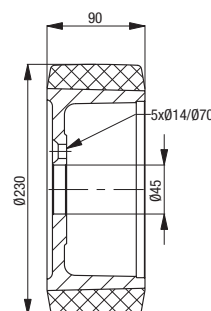
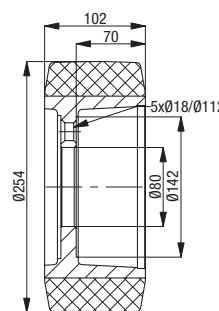
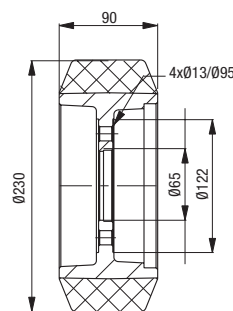
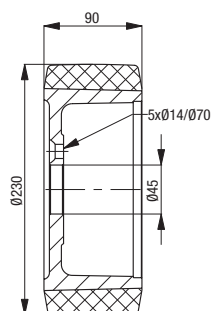
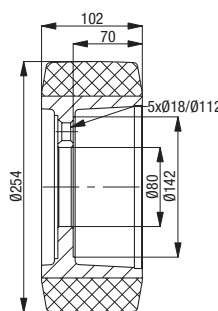
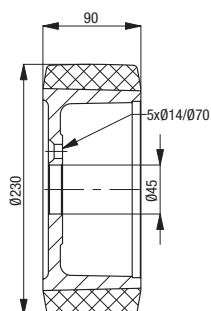


Fenwick-Linde



Fenwick-Linde

Suitable for manufacturer no. 39933826	Suitable for manufacturer no. 39902311	Suitable for manufacturer no. 39933824	Suitable for manufacturer no. 39902310	Suitable for manufacturer no. 39902308	Suitable for manufacturer no. 39933826
Product code RB 230x90/45-5	Product code RB 254x102/80-5	Product code REV 230x90/45-5	Product code REV 230x90/65-4	Product code REV 254x102/80-5	Product code RTH 230x90/45-5



Other dimensions available upon request