

## RTH, RB, REV series

**Wheels for stackers,  
drive and running wheels  
for forklift trucks**



### Wheel: RTH series

- tread: high-quality polyurethane elastomer Blickle Extrathane®, hardness 92 Shore A, low rolling resistance, high abrasion resistance, high cut and tear propagation resistance, colour light brown, non-marking, non-staining, excellent chemical connection with the wheel centre (see page 55 for a material description)
- wheel centre: rugged grey cast iron or ductile cast iron
- overview wheel series page 79

### Wheel: RB series

- tread: high-quality polyurethane elastomer Blickle Besthane®, hardness 92 Shore A, very low rolling resistance, **high dynamic load capacity**, high abrasion resistance, high cut and tear propagation resistance, colour brown, non-marking, non-staining, excellent chemical connection with the wheel centre (see page 56 for a material description)
- wheel centre: rugged grey cast iron or ductile cast iron
- overview wheel series page 80

### Wheel: REV series

- tyre: high-quality elastic solid rubber in drive-quality, hardness 70 Shore A, very good operational comfort, very good floor preservation, low-noise operation, colour black (see page 53 for a material description)
- wheel centre: rugged grey cast iron or ductile cast iron
- overview wheel series page 79



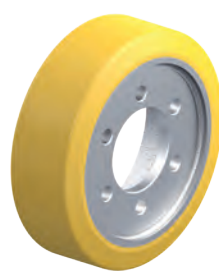
**BT**



**BV**



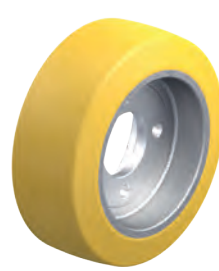
**BV**



**BV**

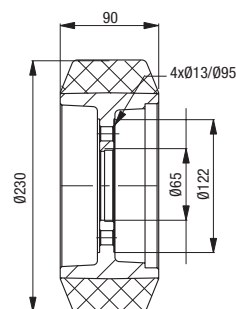
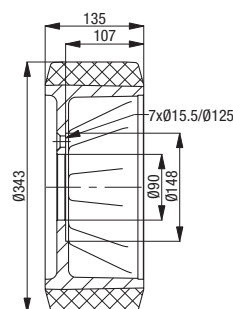
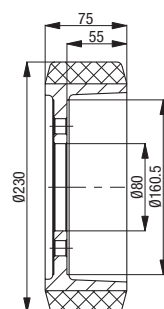
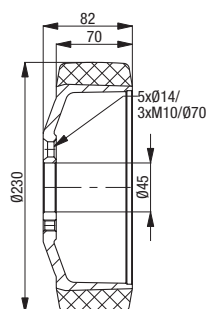
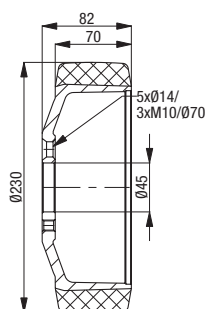
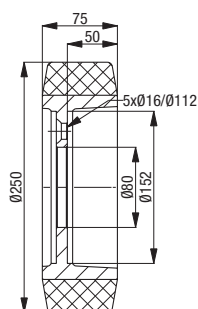


**Fenwick-Linde**



**Fenwick-Linde**

Suitable for manufacturer no. <b>138457</b>	Suitable for manufacturer no. <b>3070056</b>	Suitable for manufacturer no. <b>3070053</b>	Suitable for manufacturer no. <b>3070068</b>	Suitable for manufacturer no. <b>29903814</b>	Suitable for manufacturer no. <b>39902305</b>
Product code <b>RTH 250x75/80-5</b>	Product code <b>REV 230x70/45-5+3</b>	Product code <b>RTH 230x70/45-5+3</b>	Product code <b>RTH 230x75/80-6</b>	Product code <b>RB 343x135/90-7</b>	Product code <b>RTH 230x90/65-4</b>



Other dimensions available upon request