

## GVU series

### Heavy-duty wheels with Vulkollan® tread, with cast iron wheel centre

450–1,200 kg

#### Tread and tyre hardness

92 Shore A

#### Smooth operation / floor preservation

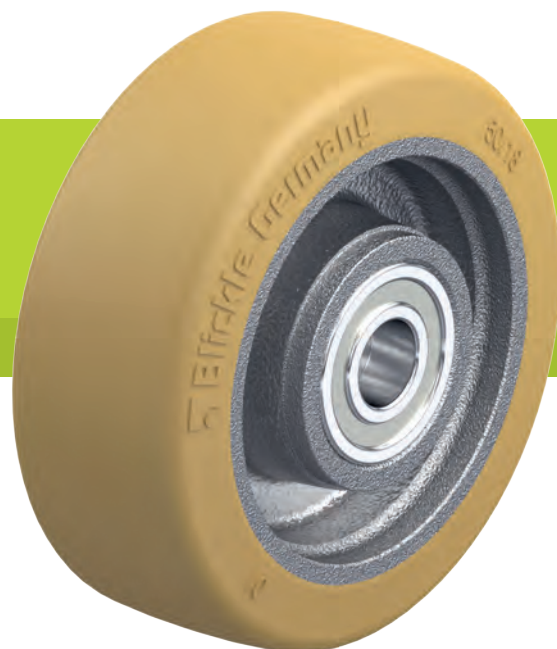
good

#### Rolling resistance

very good

#### Wear resistance

excellent



#### Tread:

- high-quality polyurethane elastomer Vulkollan®, hardness 92 Shore A
- low rolling resistance
- **high dynamic load capacity**
- high abrasion resistance
- high cut and tear propagation resistance
- colour natural, non-marking, non-staining
- excellent chemical connection with the wheel centre

#### Wheel centre:

- rugged grey cast iron
- with grease nipple from wheel Ø 150 mm
- lacquered, colour silver

#### Other features:

- high chemical resistance to many aggressive substances
- operating temperature: -20 °C to +70 °C, temporarily up to +90 °C, reduced load capacity over +40 °C

#### Additional details:

- wheel series: page 68
- tread: page 56
- bearing types: page 84–85
- chemical resistance: page 51

Wheels	Wheel Ø (D) [mm]	Wheel width (T2) [mm]	Load capacity at 4 km/h [kg]	Load capacity at 10 km/h [kg]	Load capacity at 16 km/h [kg]	Bearing type	Axle bore Ø (d) [mm]	Hub length (T1) [mm]	Clamping length (T5) [mm]
GVU 100/15K	100	40	450	–	–	ball bearing	15	40	40
GVU 101/20-50K	100	50	600	–	–	ball bearing	20	50	50
GVU 128/20K	125	60	850	590	340	ball bearing	20	60	60
GVU 140/20K	140	54	900	630	360	ball bearing	20	60	60
GVU 150/20-50K	150	50	800	560	320	ball bearing	20	50	50
GVU 150x54/20-60K	150	54	850	590	340	ball bearing	20	60	60
GVU 154/25-78K	150	80	1,200	840	480	ball bearing	25	80	80
GVU 182/25K	180	65	1,100	770	440	ball bearing	25	75	75

For other dimensions, see page 326

