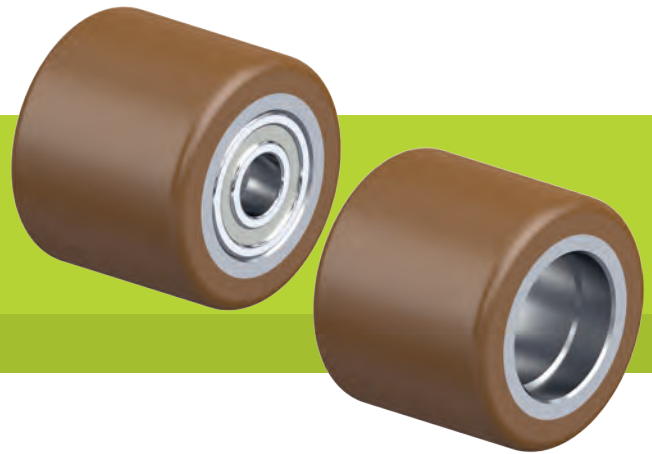


## HB series

Rollers for pallet trucks with  
Blickle Besthane® polyurethane tread,  
with metal wheel centre



550–960 kg

**Tread and tyre hardness**

92 Shore A

**Smooth operation / floor preservation**

good

**Rolling resistance**

excellent

**Wear resistance**

excellent

**Tread:**

- high-quality polyurethane elastomer Blickle Besthane®, hardness 92 Shore A
- very low rolling resistance
- **high dynamic load capacity**
- high abrasion resistance
- high cut and tear propagation resistance
- colour brown, non-marking, non-staining
- excellent chemical connection with the wheel centre

**Wheel centre:**

- metal

**Other features:**

- high chemical resistance to many aggressive substances
- operating temperature: -20 °C to +70 °C, temporarily up to +90 °C, reduced load capacity over +40 °C

**Additional details:**

- wheel series: page 78
- tread: page 56
- bearing types: page 84–85
- chemical resistance: page 51



Rollers for pallet trucks with ball bearing	Wheel Ø (D) [mm]	Wheel width (T2) [mm]	Axle bore Ø (d) [mm]	Clamping length (T5) [mm]	Ball bearing	Rollers for pallet trucks without ball bearing	Bearing seating Ø (S) [mm]	Bearing seating depth (t) [mm]	Load capacity [kg]
HB 80x70/20-70K	80	70	20	70	6204 ZZ	RK-HB 080x070/47x14-70-Z	47	14	630
HB 82x60/20-60K	82	60	20	60	6204 ZZ	RK-HB 082x060/47x14-60-Z	47	14	550
HB 82x60/25-60K	82	60	25	60	6005 ZZ	RK-HB 082x060/47x14-60-Z	47	14	550
HB 82x65/20-65K	82	65	20	65	6204 ZZ	RK-HB 082x065/47x14-65-Z	47	14	590
HB 82x65/20-71K	82	65	20	71	6204 ZZV	RK-HB 082x065/47x14-65-Z	47	14	590
HB 82x70/20-70K	82	70	20	70	6204 ZZ	RK-HB 082x070/47x14-70-Z	47	14	640
HB 82x70/20-72K	82	70	20	72	6204 ZZV	RK-HB 082x070/47x14-70-Z	47	14	640
HB 82x100/20-100K	82	100	20	100	6204 ZZ	RK-HB 082x100/47x14-100-Z	47	14	920
HB 82x100/20-104K	82	100	20	104	6204 ZZV	RK-HB 082x100/47x14-100-Z	47	14	920
HB 85x60/17-60K	85	60	17	60	6303 ZZ	RK-HB 085x060/47x14-60-Z	47	14	560
HB 85x60/20-60K	85	60	20	60	6204 ZZ	RK-HB 085x060/47x14-60-Z	47	14	560
HB 85x60/20-65K	85	60	20	65	6204 ZZV	RK-HB 085x060/47x14-60-Z	47	14	560
HB 85x70/17-70K	85	70	17	70	6303 ZZ	RK-HB 085x070/47x14-70-Z	47	14	660
HB 85x70/20-70K	85	70	20	70	6204 ZZ	RK-HB 085x070/47x14-70-Z	47	14	660
HB 85x70/20-75K	85	70	20	75	6204 ZZV	RK-HB 085x070/47x14-70-Z	47	14	660
HB 85x75/17-75K	85	75	17	75	6303 ZZ	RK-HB 085x075/47x14-75-Z	47	14	720
HB 85x75/20-75K	85	75	20	75	6204 ZZ	RK-HB 085x075/47x14-75-Z	47	14	720
HB 85x75/25-75K	85	75	25	75	6005 ZZ	RK-HB 085x075/47x14-75-Z	47	14	720
HB 85x80/17-82K	85	80	17	82	6303 ZZ	RK-HB 085x080/47x14-80-Z	47	14	770
HB 85x80/20-80K	85	80	20	80	6204 ZZ	RK-HB 085x080/47x14-80-Z	47	14	770
HB 85x80/20-85K	85	80	20	85	6204 ZZV	RK-HB 085x080/47x14-80-Z	47	14	770
HB 85x80/25-80K	85	80	25	80	6005 ZZ	RK-HB 085x080/47x14-80-Z	47	14	770
HB 85x80/25-85K	85	80	25	85	6005 ZZV	RK-HB 085x080/47x14-80-Z	47	14	770
HB 85x90/17-90K	85	90	17	90	6303 ZZ	RK-HB 085x090/47x14-90-Z	47	14	850
HB 85x90/20-90K	85	90	20	90	6204 ZZ	RK-HB 085x090/47x14-90-Z	47	14	850
HB 85x100/17-100K	85	100	17	100	6303 ZZ	RK-HB 085x100/47x14-100-Z	47	14	960
HB 85x100/20-100K	85	100	20	100	6204 ZZ	RK-HB 085x100/47x14-100-Z	47	14	960
HB 85x100/20-102K	85	100	20	102	6204 ZZV	RK-HB 085x100/47x14-100-Z	47	14	960
HB 85x100/25-100K	85	100	25	100	6005 ZZ	RK-HB 085x100/47x14-100-Z	47	14	960

Other dimensions available upon request

### Versions / options



	hydrolysis resistant, with nylon wheel centre	splash and washproof version
Technical description page	56	56
Product code suffix	<b>HPOB series</b>	<b>HBW series</b>
Available for	upon request	upon request

