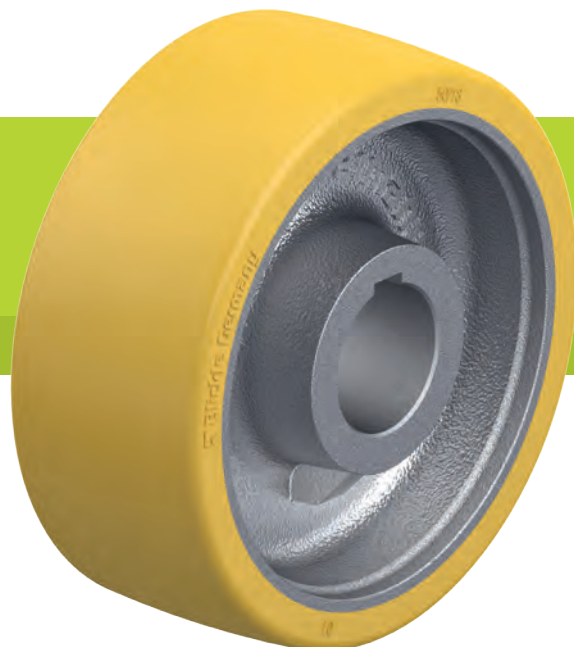


GTHN series, wheel \varnothing 75–200 mm

Heavy-duty drive wheels with hub keyway with Blickle Extrathane® polyurethane tread, with cast iron wheel centre



300–1,400 kg

Tread and tyre hardness

92 Shore A

Smooth operation / floor preservation

good

Rolling resistance

very good

Wear resistance

excellent



Tread:

- high-quality polyurethane elastomer Blickle Extrathane®, hardness 92 Shore A
- low rolling resistance
- high abrasion resistance
- high cut and tear propagation resistance
- colour light brown, non-marking, non-staining
- excellent chemical connection with the wheel centre

Wheel centre:

- rugged grey cast iron
- axle bore and hub keyway in accordance with DIN 6885
- lacquered, colour silver

Other features:

- high chemical resistance to many aggressive substances
- operating temperature: -30 °C to +70 °C, temporarily up to +90 °C, reduced load capacity over +40 °C

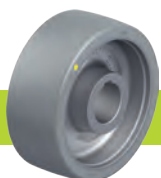
Additional details:

- wheel series: page 75
- tread: page 55
- chemical resistance: page 51

Wheels	Wheel \varnothing (D) [mm]	Wheel width (T2) [mm]	Load capacity at 4 km/h [kg]	Load capacity at 10 km/h [kg]	Axle bore \varnothing (d) [mm]	Hub keyway width (B) [mm]	Hub keyway height (H) [mm]	Hub length (T1) [mm]
GTHN 75/20H7	75	40	300	–	20 H7	6 JS9	22.8	40
GTHN 100/20H7	100	40	400	–	20 H7	6 JS9	22.8	40
GTHN 100/25H7	100	40	400	–	25 H7	8 JS9	28.3	40
GTHN 125/20H7	125	40	450	–	20 H7	8 JS9	22.8	40
GTHN 125/25H7	125	40	450	–	25 H7	8 JS9	28.3	40
GTHN 127/25H7	125	50	650	320	25 H7	8 JS9	28.3	60
GTHN 127/30H7	125	50	650	320	30 H7	8 JS9	33.3	60
GTHN 140/25H7	140	50	670	330	25 H7	8 JS9	28.3	60
GTHN 140/30H7	140	50	670	330	30 H7	8 JS9	33.3	60
GTHN 150/25H7	150	50	700	350	25 H7	8 JS9	28.3	60
GTHN 150/30H7	150	50	700	350	30 H7	8 JS9	33.3	60
GTHN 150/35H7	150	50	700	350	35 H7	10 JS9	38.3	60
GTHN 160/25H7	160	50	700	350	25 H7	8 JS9	28.3	60
GTHN 160/30H7	160	50	700	350	30 H7	8 JS9	33.3	60
GTHN 180/25H7	180	50	850	420	25 H7	8 JS9	28.3	60
GTHN 180/30H7	180	50	850	420	30 H7	8 JS9	33.3	60
GTHN 180/35H7	180	50	850	420	35 H7	10 JS9	38.3	60
GTHN 200/25H7	200	50	900	450	25 H7	8 JS9	28.3	60
GTHN 200/30H7	200	50	900	450	30 H7	8 JS9	33.3	60
GTHN 200/35H7	200	50	900	450	35 H7	10 JS9	38.3	60
GTHN 200/40H7	200	50	900	450	40 H7	12 JS9	43.3	60
GTHN 202/35H7	200	80	1,400	700	35 H7	10 JS9	38.3	80
GTHN 202/40H7	200	80	1,400	700	40 H7	12 JS9	43.3	80
GTHN 202/50H7	200	80	1,400	700	50 H7	14 JS9	53.8	80

For other dimensions, please refer to the next page

Versions / options



antistatic version,
non-marking grey

Technical description page 50

Product code suffix **-AS**

Available for upon request

