

HRLSD series

Welded steel heavy-duty levelling castors with adjustable mounting height, with top plate

1,300 kg

Bracket: HRLSD series

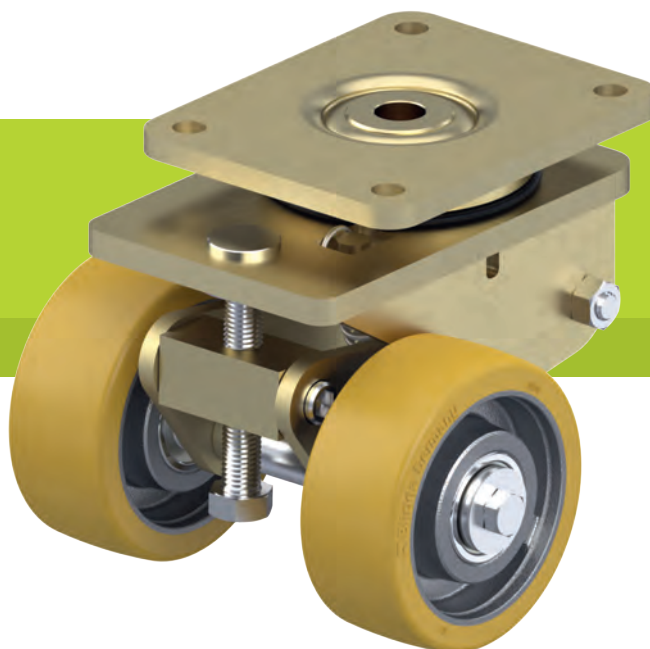
- particularly robust welded steel construction, zinc-plated, yellow-passivated, Cr6-free
- axial grooved ball bearing ISO 104 and tapered roller bearing ISO 355 in the swivel head
- dust and splash-proof
- welded guide sleeve for extremely strong truck lock
- wheels and truck lock can be levelled using a wrench (SW24)
- grease nipple

Wheel:

- SPO series
- high-quality nylon 6, impact resistant, hardness 70 Shore D, extremely robust heavy-duty version, colour natural white
- GTH series
- tread: high-quality polyurethane elastomer Blickle Extrathane®, hardness 92 Shore A, colour light brown
 - wheel centre: rugged grey cast iron

Additional details:

- bracket series: page 101
- wheel series: page 66–69
- bearing types: page 84–85



Swivel castors	Wheel Ø (D) [mm]	Wheel width [mm]	Load capacity [kg]	Bearing type	Total height (H) [mm]	Total height max. (h) [mm]	Floor clearance foot max. [mm]	Plate size [mm]	Bolt hole spacing [mm]	Bolt hole Ø [mm]	Offset swivel castor [mm]
SPO series											
HRLSD-SPO 125K	125	2 x 40	1,300	ball bearing	170	210	40	175 x 140	140 x 105	14	70
GTH series											
HRLSD-GTH 127K	125	2 x 50	1,300	ball bearing	170	210	40	175 x 140	140 x 105	14	70

Floor clearance with screwed in truck lock and levelling screw

Versions / options

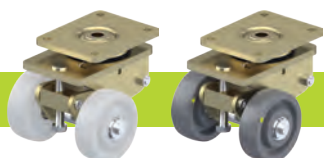


	image SPO series	electrically conductive version, wheel non-marking grey
Technical description page	69	50
Product code suffix		-EL
Available for		SPO series upon request

