

LSFN-GTH, BSFN-GTH series

Welded steel heavy-duty castors with steel spring, wheel with Blickle Extrathane® polyurethane tread

800–2,400 kg

Bracket: LSFN/BSFN series

- particularly robust welded steel construction, zinc-plated, yellow-passivated, Cr6-free
- robust spring structure with steel spring
- maintenance-free spring mechanism

Swivel bracket:

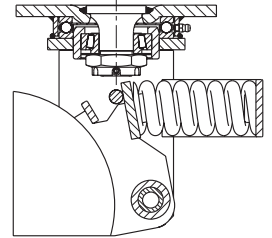
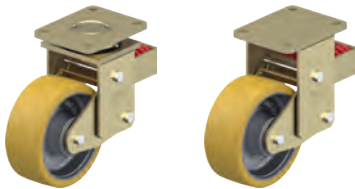
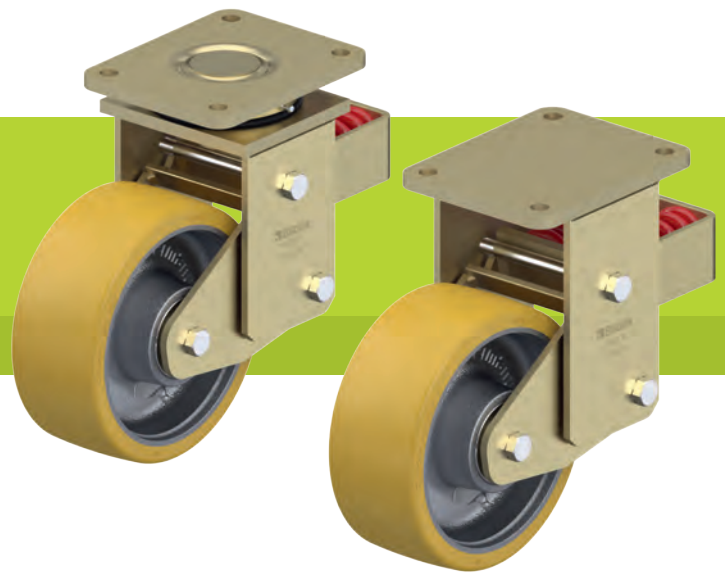
- axial grooved ball bearing ISO 104 and tapered roller bearing ISO 355 in the swivel head
- bolted and secured welded central kingpin, extremely strong
- dust and splash-proof
- grease nipple

Wheel: GTH series

- tread: high-quality polyurethane elastomer Blickle Extrathane®, hardness 92 Shore A, colour light brown, non-marking, non-staining
- wheel centre: rugged grey cast iron, with grease nipple, lacquered, colour silver

Additional details:

- bracket series: page 95
- wheel series: page 66
- bearing types: page 84–85



Swivel castors	Fixed castors	Wheel Ø [mm]	Wheel width [mm]	Load capacity [kg]	Spring force [kg]	Pretensioning force [kg]	Spring travel [mm]	Total height [mm]	Plate size [mm]	Bolt hole spacing [mm]	Bolt hole Ø [mm]	Offset swivel castor [mm]
LSFN-GTH 160K	BSFN-GTH 160K	160	50	800	570	75	25	245	140 x 110	105 x 75–80	11	100
LSFN-GTH 200K	BSFN-GTH 200K	200	50	1,000	570	75	25	265	140 x 110	105 x 75–80	11	100
LSFN-GTH 202K	BSFN-GTH 202K	200	80	1,600	750	100	25	275	175 x 140	140 x 105	14	100
LSFN-GTH 250K	BSFN-GTH 250K	250	60	1,500	750	100	25	315	175 x 140	140 x 105	14	120
LSFN-GTH 252K	BSFN-GTH 252K	250	80	2,200	1,000	150	45	370	200 x 160	160 x 120	14	120
LSFN-GTH 252K-F30	BSFN-GTH 252K-F30	250	80	2,200	1,500	150	30	370	200 x 160	160 x 120	14	120
LSFN-GTH 302K	BSFN-GTH 302K	300	80	2,400	1,000	150	45	395	200 x 160	160 x 120	14	120
LSFN-GTH 302K-F30	BSFN-GTH 302K-F30	300	80	2,400	1,500	150	30	395	200 x 160	160 x 120	14	120

Version F30 with shortened spring travel

Versions / options



	antistatic version, non-marking grey	with "Radstop" wheel brake	with directional lock
Technical description page	50	113	115
Product code suffix	-AS	-RA	
Available for	upon request	upon request	upon request