

LPFE-ALTH, BPFE-ALTH series

Heavy-duty castors with polyurethane torsion springs, wheel with Blickle Extrathane® polyurethane tread

350–500 kg

Bracket: LPFE/BPFE series

- solid welded steel construction, solid forged part, zinc-plated, yellow-passivated, Cr6-free
- patented woodruff key design for outstanding spring-damping properties

Swivel bracket:

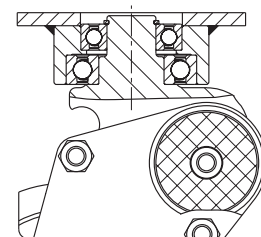
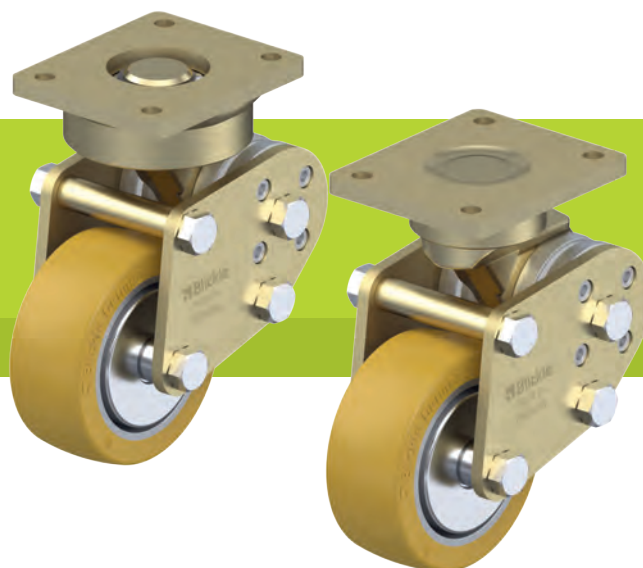
- one sealed lifetime lubricated grooved ball bearing in the swivel head (two for wheel Ø 125x50 mm or more)

Wheel: ALTH series

- tread: high-quality polyurethane elastomer Blickle Extrathane®, hardness 92 Shore A, colour light brown, non-marking, non-staining
- wheel centre: die-cast aluminium, colour silver grey

Additional details:

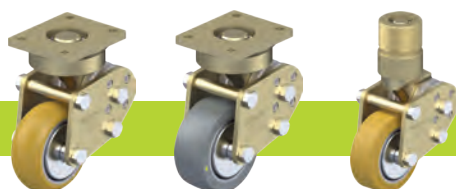
- bracket series: page 95
- wheel series: page 65
- bearing types: page 84–85



Swivel castors	Fixed castors	Wheel Ø [mm]	Wheel width [mm]	Load capacity [kg]	Spring force [kg]	Pretensioning force [kg]	Spring travel [mm]	Total height [mm]	Plate size [mm]	Bolt hole spacing [mm]	Bolt hole Ø [mm]	Offset swivel castor [mm]
LPFE-ALTH 101K-FA	BPFE-ALTH 101K-FA	100	40	350	330	40	16	170	100 x 85	80 x 60	9	38
LPFE-ALTH 101K-FA-CO	BPFE-ALTH 101K-FA-CO	100	40	350	330	40	16	170	100 x 85	80 x 60	9	38
LPFE-ALTH 125K-FA	BPFE-ALTH 125K-FA	125	40	350	290	40	18	192	100 x 85	80 x 60	9	45
LPFE-ALTH 125K-FA-CO	BPFE-ALTH 125K-FA-CO	125	40	350	290	40	18	192	100 x 85	80 x 60	9	45
LPFE-ALTH 127K	BPFE-ALTH 127K	125	54	450	500	40	25	225	140 x 110	105 x 75–80	11	61
LPFE-ALTH 150K	BPFE-ALTH 150K	150	50	500	500	40	25	255	140 x 110	105 x 75–80	11	61

11

Versions / options



	version with extremely crowned tread	antistatic version, non-marking grey	with stem
Technical description page	55	50	104
Product code suffix	-CO	-AS	-ZA
Available for		all	upon request