

LHF-ALTH, BHF-ALTH series

Pressed steel castors, heavy-duty design, with steel spring, wheel with Blickle Extrathane® polyurethane tread

350–800 kg

Bracket: LHF/BHF series

- strong pressed steel, zinc-plated, blue-passivated, Cr6-free
- heavy fork and top plate
- robust spring structure with steel spring
- maintenance-free spring mechanism

Swivel bracket:

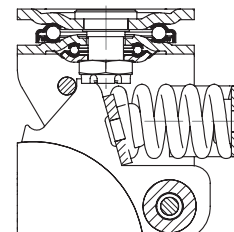
- double ball bearing in the swivel head
- bolted and secured central kingpin, extremely strong
- particularly resistant to shocks and impact due to **four specially-shaped, hardened bearing seats**

Wheel: ALTH series

- tread: high-quality polyurethane elastomer Blickle Extrathane®, hardness 92 Shore A, colour light brown, non-marking, non-staining
- wheel centre: die-cast aluminium, colour silver grey

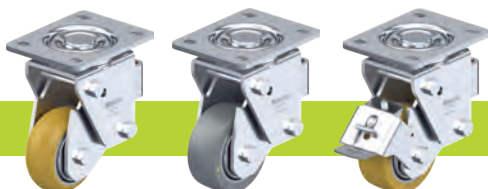
Additional details:

- bracket series: page 94
- wheel series: page 65
- bearing types: page 84–85



Swivel castors	Fixed castors	Wheel Ø [mm]	Wheel width [mm]	Load capacity [kg]	Spring force [kg]	Pretensioning force [kg]	Spring travel [mm]	Total height [mm]	Plate size [mm]	Bolt hole spacing [mm]	Bolt hole Ø [mm]	Offset swivel castor [mm]
LHF-ALTH 101K-1-FA	BHF-ALTH 101K-1-FA	100	40	350	200	30	19	175	100 x 85	80 x 60	9	32
LHF-ALTH 101K-1-FA-CO	BHF-ALTH 101K-1-FA-CO	100	40	350	200	30	19	175	100 x 85	80 x 60	9	32
LHF-ALTH 101K-3-FA	BHF-ALTH 101K-3-FA	100	40	350	200	30	19	175	140 x 110	105 x 75–80	11	32
LHF-ALTH 101K-3-FA-CO	BHF-ALTH 101K-3-FA-CO	100	40	350	200	30	19	175	140 x 110	105 x 75–80	11	32
LHF-ALTH 125K-1-FA	BHF-ALTH 125K-1-FA	125	40	350	240	30	21	200	100 x 85	80 x 60	9	41
LHF-ALTH 125K-1-FA-CO	BHF-ALTH 125K-1-FA-CO	125	40	350	240	30	21	200	100 x 85	80 x 60	9	41
LHF-ALTH 125K-3-FA	BHF-ALTH 125K-3-FA	125	40	350	240	30	21	200	140 x 110	105 x 75–80	11	41
LHF-ALTH 125K-3-FA-CO	BHF-ALTH 125K-3-FA-CO	125	40	350	240	30	21	200	140 x 110	105 x 75–80	11	41
LHF-ALTH 160K	BHF-ALTH 160K	160	50	750	570	50	25	245	140 x 110	105 x 75–80	11	65
LHF-ALTH 160K-CO	BHF-ALTH 160K-CO	160	50	750	570	50	25	245	140 x 110	105 x 75–80	11	65
LHF-ALTH 200K	BHF-ALTH 200K	200	50	800	570	50	25	265	140 x 110	105 x 75–80	11	65
LHF-ALTH 200K-CO	BHF-ALTH 200K-CO	200	50	800	570	50	25	265	140 x 110	105 x 75–80	11	65

Versions / options



	version with extremely crowned tread	antistatic version, non-marking grey	with "Radstop" wheel brake
Technical description page	55	50	113
Product code suffix	-CO	-AS	-RA
Available for		all	upon request