

## LSFE-GST, BSFE-GST series

### Welded steel heavy-duty castors with polyurethane spring, wheel with Blickle Softhane® polyurethane tread

600–1,400 kg

**Bracket:** LSFE/BSFE series

- particularly robust welded steel construction, zinc-plated, yellow-passivated, Cr6-free
- elastomer spring for excellent damping properties
- maintenance-free spring mechanism

**Swivel bracket:**

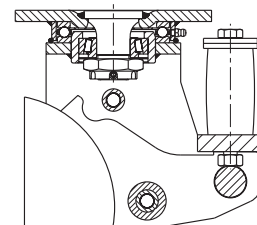
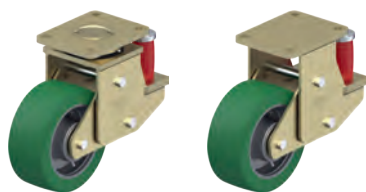
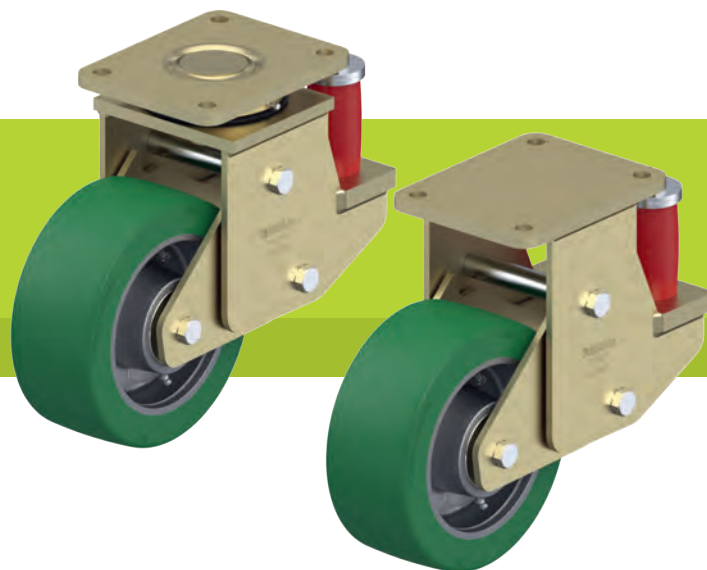
- axial grooved ball bearing ISO 104 and tapered roller bearing ISO 355 in the swivel head
- bolted and secured welded central kingpin, extremely strong
- dust and splash-proof
- grease nipple

**Wheel:** GST series

- tread: high-quality polyurethane elastomer Blickle Softhane®, hardness 75 Shore A, colour green, non-marking, non-staining
- wheel centre: rugged grey cast iron, with grease nipple, lacquered, colour silver

**Additional details:**

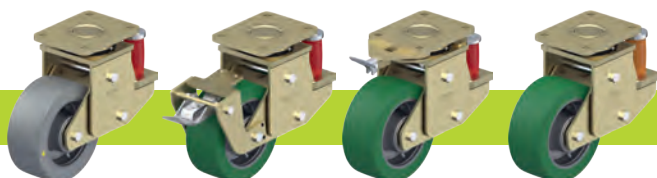
- bracket series: page 95
- wheel series: page 67
- bearing types: page 84–85



Swivel castors	Fixed castors	Wheel Ø [mm]	Wheel width [mm]	Load capacity [kg]	Spring force [kg]	Pretensioning force [kg]	Spring travel [mm]	Total height [mm]	Plate size [mm]	Bolt hole spacing [mm]	Bolt hole Ø [mm]	Offset swivel castor [mm]
LSFE-GST 160K	BSFE-GST 160K	160	50	600	500	50	25	245	140 x 110	105 x 75–80	11	100
LSFE-GST 200K	BSFE-GST 200K	200	50	800	500	50	25	265	140 x 110	105 x 75–80	11	100
LSFE-GST 202K	BSFE-GST 202K	200	80	1,200	850	150	25	275	175 x 140	140 x 105	14	100
LSFE-GST 250K	BSFE-GST 250K	250	60	1,200	850	150	25	315	175 x 140	140 x 105	14	120
LSFE-GST 252K	BSFE-GST 252K	250	80	1,400	1,200	200	25	315	200 x 160	160 x 120	14	120

11

#### Versions / options



	antistatic version, non-marking grey	with "Radstop" wheel brake	with directional lock	different spring tension
Technical description page	50	113	115	
<b>Product code suffix</b>	<b>-AS</b>	<b>-RA</b>		
Available for	upon request	upon request	upon request	upon request