

## LHF-ALST, BHF-ALST series

**Pressed steel castors, heavy-duty design, with steel spring, wheel with Blickle Softhane® polyurethane tread**

320–750 kg

**Bracket:** LHF/BHF series

- strong pressed steel, zinc-plated, blue-passivated, Cr6-free
- heavy fork and top plate
- robust spring structure with steel spring
- maintenance-free spring mechanism

**Swivel bracket:**

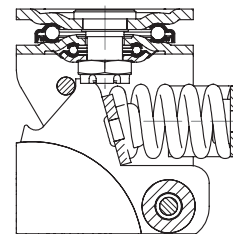
- double ball bearing in the swivel head
- bolted and secured central kingpin, extremely strong
- particularly resistant to shocks and impact due to **four specially-shaped, hardened bearing seats**

**Wheel:** ALST series

- tread: high-quality polyurethane elastomer Blickle Softhane®, hardness 75 Shore A, colour green, non-marking, non-staining
- wheel centre: die-cast aluminium, colour silver grey

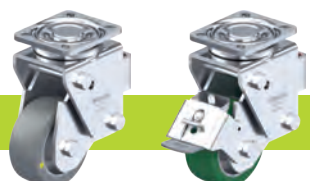
**Additional details:**

- bracket series: page 94
- wheel series: page 66
- bearing types: page 84–85



Swivel castors	Fixed castors	Wheel Ø [mm]	Wheel width [mm]	Load capacity [kg]	Spring force [kg]	Pretensioning force [kg]	Spring travel [mm]	Total height [mm]	Plate size [mm]	Bolt hole spacing [mm]	Bolt hole Ø [mm]	Offset swivel castor [mm]
LHF-ALST 100K-1	BHF-ALST 100K-1	100	40	320	200	30	19	175	100 x 85	80 x 60	9	32
LHF-ALST 100K-3	BHF-ALST 100K-3	100	40	320	200	30	19	175	140 x 110	105 x 75–80	11	32
LHF-ALST 125K-1	BHF-ALST 125K-1	125	40	350	240	30	21	200	100 x 85	80 x 60	9	45
LHF-ALST 125K-3	BHF-ALST 125K-3	125	40	350	240	30	21	200	140 x 110	105 x 75–80	11	45
LHF-ALST 160K	BHF-ALST 160K	160	50	580	570	50	25	245	140 x 110	105 x 75–80	11	65
LHF-ALST 200K	BHF-ALST 200K	200	50	750	570	50	25	265	140 x 110	105 x 75–80	11	65

### Versions / options



	antistatic version, non-marking grey	with "Radstop" wheel brake
Technical description page	50	113
<b>Product code suffix</b>	<b>-AS</b>	<b>-RA</b>
Available for	upon request	upon request