

## LSFE-SE, BSFE-SE series

### Welded steel heavy-duty castors with polyurethane spring, wheel with "Blickle EasyRoll" elastic solid rubber tyres

450–1,000 kg

**Bracket:** LSFE/BSFE series

- particularly robust welded steel construction, zinc-plated, yellow-passivated, Cr6-free
- elastomer spring for excellent damping properties
- maintenance-free spring mechanism

**Swivel bracket:**

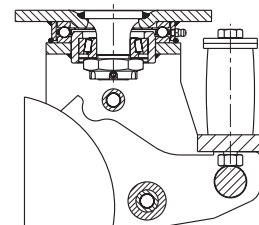
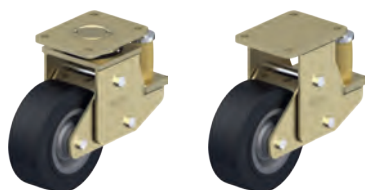
- axial grooved ball bearing ISO 104 and tapered roller bearing ISO 355 in the swivel head
- bolted and secured welded central kingpin, extremely strong
- dust and splash-proof
- grease nipple

**Wheel:** SE series

- tyre: high-quality elastic solid rubber "Blickle EasyRoll" in smooth rolling quality, hardness 65 Shore A, colour black
- wheel centre: thick-walled pressed steel, lacquered, colour anthracite

**Additional details:**

- bracket series: page 95
- wheel series: page 63
- bearing types: page 84–85



| Swivel castors | Fixed castors | Wheel Ø<br>[mm] | Wheel width<br>[mm] | Load capacity<br>[kg] | Spring force<br>[kg] | Pretensioning force<br>[kg] | Spring travel<br>[mm] | Total height<br>[mm] | Plate size<br>[mm] | Bolt hole spacing<br>[mm] | Bolt hole Ø<br>[mm] | Offset swivel castor<br>[mm] |
|----------------|---------------|-----------------|---------------------|-----------------------|----------------------|-----------------------------|-----------------------|----------------------|--------------------|---------------------------|---------------------|------------------------------|
| LSFE-SE 160K   | BSFE-SE 160K  | 160             | 50                  | 450                   | 300                  | 50                          | 25                    | 245                  | 140 x 110          | 105 x 75–80               | 11                  | 100                          |
| LSFE-SE 200K   | BSFE-SE 200K  | 200             | 50                  | 600                   | 500                  | 50                          | 25                    | 265                  | 140 x 110          | 105 x 75–80               | 11                  | 100                          |
| LSFE-SE 202K   | BSFE-SE 202K  | 200             | 80                  | 850                   | 700                  | 100                         | 25                    | 275                  | 175 x 140          | 140 x 105                 | 14                  | 100                          |
| LSFE-SE 250K   | BSFE-SE 250K  | 250             | 60                  | 850                   | 700                  | 100                         | 25                    | 315                  | 175 x 140          | 140 x 105                 | 14                  | 120                          |
| LSFE-SE 252K   | BSFE-SE 252K  | 250             | 80                  | 1,000                 | 700                  | 100                         | 25                    | 315                  | 175 x 140          | 140 x 105                 | 14                  | 120                          |

#### Versions / options



|                            | with non-marking grey tyre              | with "Radstop" wheel brake | with directional lock | different spring tension |
|----------------------------|---|----------------------------|-----------------------|--------------------------|
| Technical description page | 52                                      | 113                        | 115                   |                          |
| <b>Product code suffix</b> | <b>-SG</b>                              | <b>-RA</b>                 |                       |                          |
| Available for              | wheel Ø 160–200 mm, others upon request | upon request               | upon request          | upon request             |