

## LSFN-SE, BSFN-SE series

### Welded steel heavy-duty castors with steel spring, wheel with "Blickle EasyRoll" elastic solid rubber tyres

450–1,000 kg

**Bracket:** LSFN/BSFN series

- particularly robust welded steel construction, zinc-plated, yellow-passivated, Cr6-free
- robust spring structure with steel spring
- maintenance-free spring mechanism

**Swivel bracket:**

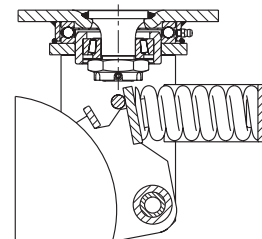
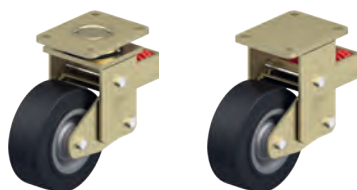
- axial grooved ball bearing ISO 104 and tapered roller bearing ISO 355 in the swivel head
- bolted and secured welded central kingpin, extremely strong
- dust and splash-proof
- grease nipple

**Wheel:** SE series

- tyre: high-quality elastic solid rubber "Blickle EasyRoll" in smooth rolling quality, hardness 65 Shore A, colour black
- wheel centre: thick-walled pressed steel, lacquered, colour anthracite

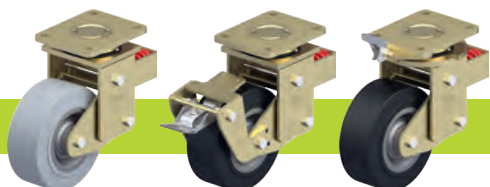
**Additional details:**

- bracket series: page 95
- wheel series: page 63
- bearing types: page 84–85



Swivel castors	Fixed castors	Wheel Ø [mm]	Wheel width [mm]	Load capacity [kg]	Spring force [kg]	Pretensioning force [kg]	Spring travel [mm]	Total height [mm]	Plate size [mm]	Bolt hole spacing [mm]	Bolt hole Ø [mm]	Offset swivel castor [mm]
LSFN-SE 160K	BSFN-SE 160K	160	50	450	400	50	25	245	140 x 110	105 x 75–80	11	100
LSFN-SE 200K	BSFN-SE 200K	200	50	600	400	50	25	265	140 x 110	105 x 75–80	11	100
LSFN-SE 202K	BSFN-SE 202K	200	80	850	570	75	25	275	175 x 140	140 x 105	14	100
LSFN-SE 250K	BSFN-SE 250K	250	60	850	570	75	25	315	175 x 140	140 x 105	14	120
LSFN-SE 252K	BSFN-SE 252K	250	80	1,000	750	100	25	315	175 x 140	140 x 105	14	120
LSFN-SE 300K	BSFN-SE 300K	300	75	1,000	850	100	45	395	200 x 160	160 x 120	14	120

#### Versions / options



	with non-marking grey tyre	with "Radstop" wheel brake	with directional lock
Technical description page	52	113	115
<b>Product code suffix</b>	<b>-SG</b>	<b>-RA</b>	
Available for	wheel Ø 160–200 mm, others upon request	upon request	upon request