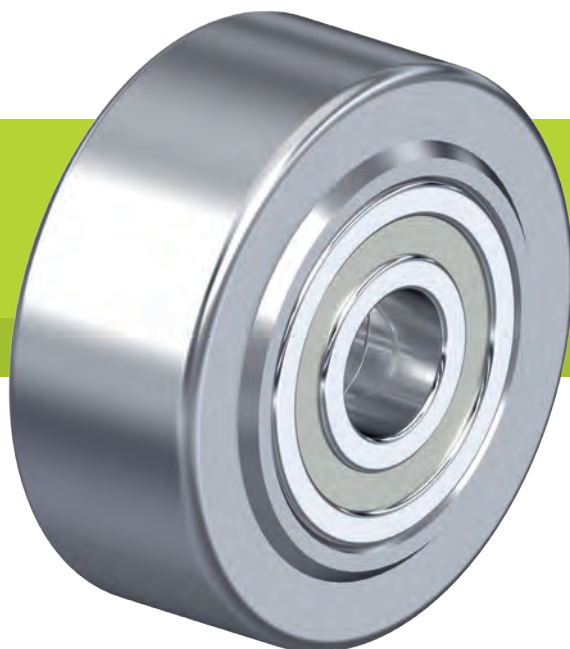


SVS series

Super heavy-duty solid steel wheels



750–15,000 kg

Tread and tyre hardness
 190–230 HB

Smooth operation / floor preservation
 sufficient

Rolling resistance
 excellent

Wear resistance
 excellent

Wheel:

- heat-treatable steel, machined, hardness 190–230 HB
- slightly crowned tread
- lightly-oiled surface
- extremely low rolling resistance
- easy operation on smooth surfaces
- outstanding wear resistance
- extremely high static and dynamic load capacity

Other features:

- chemical resistance to many aggressive substances
- operating temperature: -20 °C to +120 °C
- consider the surface pressure on sensitive floors due to high point loads
- electrical conductivity (ohmic resistance) $\leq 10^4 \Omega$

Additional details:

- wheel series: page 70
- tread: page 59
- bearing types: page 84–85
- chemical resistance: page 51

Wheels	Wheel \emptyset (D) [mm]	Wheel width (T2) [mm]	Load capacity [kg]	Bearing type	Axle bore \emptyset (d) [mm]	Hub length (T1) [mm]
SVS 65/20K	65	40	750	ball bearing	20	45
SVS 80/20K	80	40	1,100	ball bearing	20	45
SVS 100/25K	100	40	1,700	ball bearing	25	45
SVS 127/30K	125	55	2,750	ball bearing	30	60
SVS 150/45K	150	55	4,000	ball bearing	45	60
SVS 201/50K	200	55	6,000	ball bearing	50	60
SVS 200/60K	200	80	7,000	ball bearing	60	90
SVS 250/70K	250	65	10,000	ball bearing	70	75
SVS 300/100K	300	90	15,000	ball bearing	100	100

Other dimensions available upon request

Castor series



	LH-SVS	LS-SVS
Page	383	384
Load capacity class		
Available for	wheel \emptyset 65–125 mm	wheel \emptyset 100–300 mm

