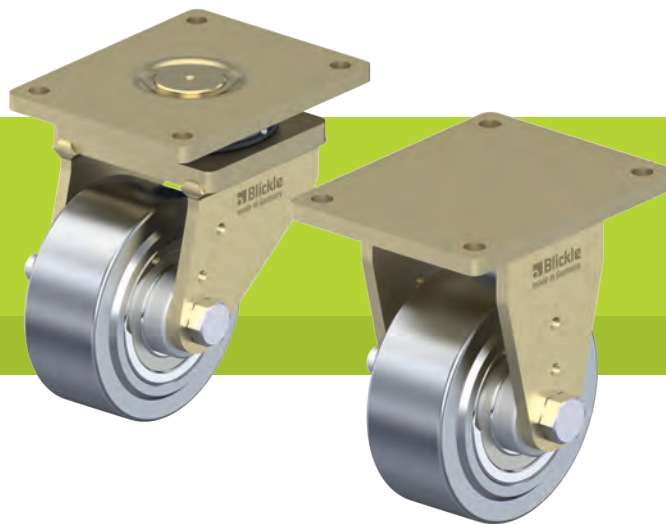


LS-SVS, BS-SVS series

**Welded steel extra heavy-duty castors,
extra heavy-duty swivel head,
with extra heavy-duty wheel made of solid steel**



1,700–12,000 kg

Bracket: LS/BS series

- particularly robust welded steel construction, zinc-plated, yellow-passivated, Cr6-free

Swivel bracket:

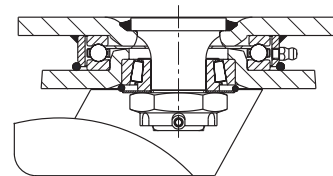
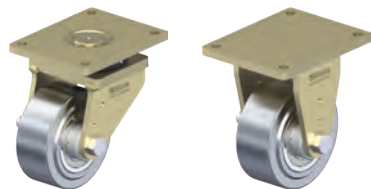
- axial grooved ball bearing ISO 104 and tapered roller bearing ISO 355 in the swivel head
- bolted and secured welded central kingpin, extremely strong
- dust and splash-proof
- grease nipple

Wheel: SVS series

- heat-treatable steel, hardness 190–230 HB, slightly crowned tread

Additional details:

- bracket series: page 94
- wheel series: page 382
- bearing types: page 84–85



Swivel castors	Fixed castors	Wheel Ø [mm]	Wheel width [mm]	Load capacity [kg]	Bearing type	Total height [mm]	Plate size [mm]	Bolt hole spacing [mm]	Bolt hole Ø [mm]	Offset swivel castor [mm]
LS-SVS 100K	BS-SVS 100K	100	40	1,700	ball bearing	145	140 x 110	105 x 75–80	11	50
LS-SVS 127K	BS-SVS 127K	125	55	1,750	ball bearing	170	140 x 110	105 x 75–80	11	50
LS-SVS 150K-35	BS-SVS 150K-35	150	55	3,000	ball bearing	205	175 x 140	140 x 105	14	65
LS-SVS 201K	BS-SVS 201K	200	55	3,000	ball bearing	255	175 x 140	140 x 105	14	65
LS-SVS 200K	BS-SVS 200K	200	80	6,000	ball bearing	280	255 x 200	210 x 160	18	75
LS-SVS 250K	BS-SVS 250K	250	65	10,000	ball bearing	380	400 x 300	340 x 240	26	110
LS-SVS 300K	BS-SVS 300K	300	90	12,000	ball bearing	430	400 x 300	340 x 240	26	110

7

Versions / options



	with directional lock 4 x 90°	with directional lock 4 x 90° (inserted by hand)	with steel foot guard
Technical description page	115	115	116
Product code suffix	-RI4	-RI4H	-FS
Available for	wheel Ø 100–200x55 mm	wheel Ø 200x80–300 mm upon request	wheel Ø 100–200 mm