

LO-G, BO-G series

Welded steel heavy-duty castors, with cast iron wheel

750–1,200 kg

Bracket: LO/BO series

- solid welded steel construction, zinc-plated, blue-passivated, Cr6-free

Swivel bracket:

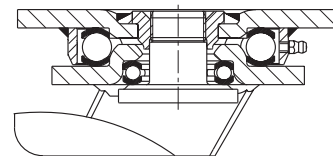
- double ball bearing in the swivel head
- **four specially-shaped, hardened bearing seats** for additional strength
- bolted and secured welded central kingpin, extremely strong
- swivel head seal with labyrinth design
- grease nipple

Wheel: G series

- rugged grey cast iron, hardness 180–220 HB, grease nipple, lacquered, colour silver

Additional details:

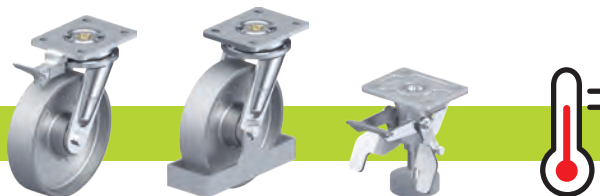
- bracket series: page 93
- brakes: page 112–113
- wheel series: page 376
- bearing types: page 84–85



Swivel castors	Fixed castors	Swivel castor with "stop-top" brake	Wheel Ø [mm]	Wheel width [mm]	Load capacity [kg]	Bearing type	Total height [mm]	Plate size [mm]	Bolt hole spacing [mm]	Bolt hole Ø [mm]	Offset swivel castor [mm]
LO-G 127G	BO-G 127G	LO-G 127G-ST	125	50	750	plain bore	170	140 x 110	105 x 75–80	11	50
LO-G 127K	BO-G 127K	LO-G 127K-ST	125	50	750	ball bearing	170	140 x 110	105 x 75–80	11	50
LO-G 150G	BO-G 150G	LO-G 150G-ST	150	50	900	plain bore	200	140 x 110	105 x 75–80	11	55
LO-G 150K	BO-G 150K	LO-G 150K-ST	150	50	900	ball bearing	200	140 x 110	105 x 75–80	11	55
LO-G 200G	BO-G 200G	LO-G 200G-ST	200	50	1,100	plain bore	245	140 x 110	105 x 75–80	11	60
LO-G 200K	BO-G 200K	LO-G 200K-ST	200	50	1,100	ball bearing	245	140 x 110	105 x 75–80	11	60
LO-G 250G	BO-G 250G	LO-G 250G-ST	250	60	1,200	plain bore	295	140 x 110	105 x 75–80	11	70
LO-G 250K	BO-G 250K	LO-G 250K-ST	250	60	1,200	ball bearing	295	140 x 110	105 x 75–80	11	70

7

Versions / options



	with directional lock 4 x 90°	with steel foot guard	truck lock	heat-resistant versions
Technical description page	115	116	114	59, 97–99
Product code suffix	-RI4	-FS	FF 125 / 150 / 200	
Available for	wheel Ø 125–200 mm	upon request	wheel Ø 125–200 mm	see series LI0-G (page 470)