

## LS-GSPO, BS-GSPO series

**Welded steel extra heavy-duty castors, extra heavy-duty swivel head, with heavy-duty wheel made of cast nylon**

1,500–12,000 kg

**Bracket:** LS/BS series

- particularly robust welded steel construction, zinc-plated, yellow-passivated, Cr6-free

**Swivel bracket:**

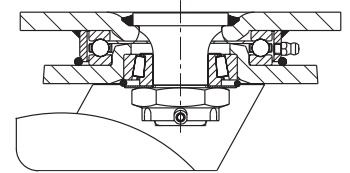
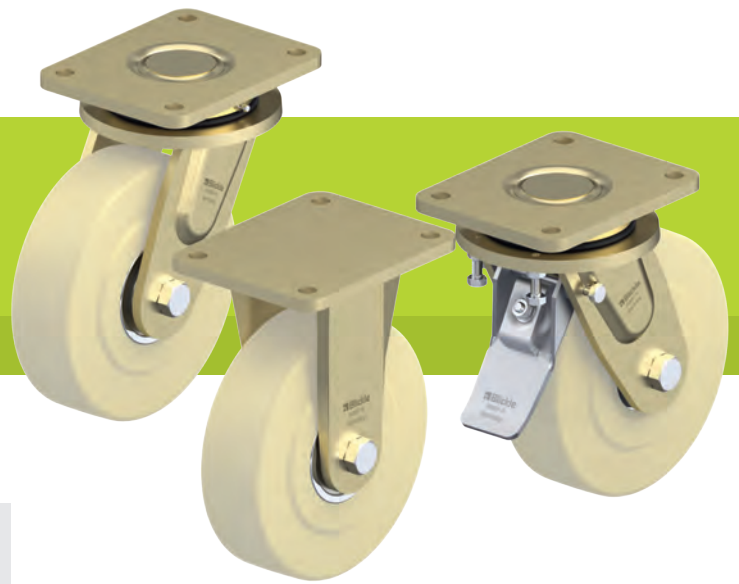
- axial grooved ball bearing ISO 104 and tapered roller bearing ISO 355 in the swivel head
- bolted and secured welded central kingpin, extremely strong
- dust and splash-proof
- grease nipple

**Wheel:** GSPO series

- high-quality cast nylon, reaction-injected, impact resistant, hardness 80 Shore D, colour natural beige

**Additional details:**

- bracket series: page 94
- brakes: page 112–113
- wheel series: page 368
- bearing types: page 84–85



6

Swivel castors	Fixed castors	Swivel castor with "stop-top" brake	Wheel Ø [mm]	Wheel width [mm]	Load capacity [kg]	Bearing type	Total height [mm]	Plate size [mm]	Bolt hole spacing [mm]	Bolt hole Ø [mm]	Offset swivel castor [mm]
LS-GSPO 101K	BS-GSPO 101K	LS-GSPO 101K-ST	100	55	1,500	ball bearing	145	140 x 110	105 x 75–80	11	50
LS-GSPO 125K	BS-GSPO 125K	LS-GSPO 125K-ST	125	55	1,750	ball bearing	170	140 x 110	105 x 75–80	11	50
LS-GSPO 150K-35	BS-GSPO 150K-35	LS-GSPO 150K-35-ST	150	55	2,500	ball bearing	205	175 x 140	140 x 105	14	65
LS-GSPO 152K-35	BS-GSPO 152K-35	LS-GSPO 152K-35-ST	150	80	3,000	ball bearing	205	175 x 140	140 x 105	14	65
LS-GSPO 200K-35	BS-GSPO 200K-35	LS-GSPO 200K-35-ST	200	55	3,000	ball bearing	255	175 x 140	140 x 105	14	65
LS-GSPO 202K	BS-GSPO 202K	*	200	80	4,500	ball bearing	280	255 x 200	210 x 160	18	75
LS-GSPO 250K	BS-GSPO 250K	*	250	65	5,000	ball bearing	330	255 x 200	210 x 160	18	80
LS-GSPO 252K	BS-GSPO 252K	*	250	80	6,000	ball bearing	330	255 x 200	210 x 160	18	80
LS-GSPO 300K	BS-GSPO 300K	*	300	80	6,000	ball bearing	380	255 x 200	210 x 160	18	90
LS-GSPO 302K	BS-GSPO 302K	*	300	110	10,000	ball bearing	430	400 x 300	340 x 240	26	110
LS-GSPO 400K	BS-GSPO 400K	*	400	110	12,000	ball bearing	530	400 x 300	340 x 240	26	125

\* "Radstop" brake version

### Versions / options



	with "Radstop" wheel brake	with directional lock 4 x 90°	with directional lock 4 x 90° (inserted by hand)	with steel foot guard	with stainless steel ball bearing in the wheel hub
Technical description page	113	115	115	116	84
Product code suffix	-RAH	-RI4	-RI4H	-FS	-XK
Available for	from wheel Ø 200x80 mm upon request	wheel Ø 100–200x55 mm	wheel Ø 200x80–400 mm upon request	wheel Ø 100–200 mm	upon request**

\*\* Some dimensions may result in reduced load capacities