

LEZ-PO series

Pressed steel castors with stem, with nylon wheel

150–300 kg

Bracket: LEZ series

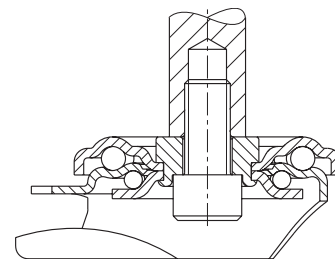
- pressed steel, zinc-plated, blue-passivated, Cr6-free
- double ball bearing in the swivel head
- minimum swivel head play and smooth rolling characteristic and increased service life due to the special dynamic Blickle riveting process
- steel plug-in stem and central kingpin bolted and secured

Wheel: PO series

- high-quality nylon 6, impact resistant, hardness 70 Shore D, colour natural white

Additional details:

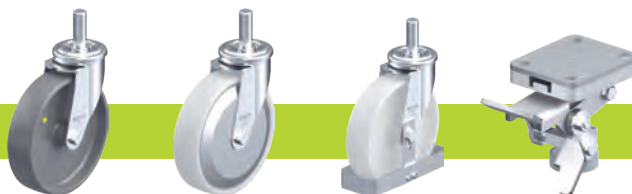
- bracket series: page 91
- brakes: page 112–113
- wheel series: page 343–344
- bearing types: page 84–85



Swivel castors	Swivel castors with "stop-fix" brake	Wheel Ø [mm]	Wheel width [mm]	Load capacity [kg]	Bearing type	Total height [mm]	Stem Ø (D) [mm]	Stem length [mm]	Offset swivel castor [mm]
LEZ-PO 75G	LEZ-PO 75G-FI	75	32	150	plain bore	100	20	50	38
LEZ-PO 80G	LEZ-PO 80G-FI	80	32	150	plain bore	102	20	50	38
LEZ-PO 100G	LEZ-PO 100G-FI	100	37	150	plain bore	125	20	50	36
LEZ-PO 125G	LEZ-PO 125G-FI	125	40	150	plain bore	150	20	50	38
LEZ-PO 150G-22	LEZ-PO 150G-22-FI	150	50	300	plain bore	190	22	60	54
LEZ-PO 150G-27	LEZ-PO 150G-27-FI	150	50	300	plain bore	190	27	60	54
LEZ-PO 160G-22	LEZ-PO 160G-22-FI	160	50	300	plain bore	195	22	60	54
LEZ-PO 160G-27	LEZ-PO 160G-27-FI	160	50	300	plain bore	195	27	60	54
LEZ-PO 200G-22	LEZ-PO 200G-22-FI	200	50	300	plain bore	235	22	60	54
LEZ-PO 200G-27	LEZ-PO 200G-27-FI	200	50	300	plain bore	235	27	60	54

For stainless steel versions, see page 419

Versions / options



	electrically conductive version, non-marking grey	with thread guard, pressed steel, zinc-plated	with steel foot guard	truck lock
Technical description page	50	116	116	114
Product code suffix	-ELS	-FA	-FS	FF 100-1 / FF 125-1
Available for	see series PO...-ELS (page 435)	all	wheel Ø 100–200 mm upon request	wheel Ø 100+125 mm