

ALB series

Heavy-duty wheels
with **Blickle Besthane®** polyurethane tread,
with aluminium wheel centre



400–1,250 kg

Tread and tyre hardness
 92 Shore A

Smooth operation / floor preservation
 good

Rolling resistance
 excellent

Wear resistance
 excellent



Tread:

- high-quality polyurethane elastomer Blickle Besthane®, hardness 92 Shore A
- very low rolling resistance
- **high dynamic load capacity**
- high abrasion resistance
- high cut and tear propagation resistance
- colour brown, non-marking, non-staining
- excellent chemical connection with the wheel centre

Wheel centre:

- die-cast aluminium

Other features:

- high chemical resistance to many aggressive substances
- operating temperature: -20 °C to +70 °C, temporarily up to +90 °C, reduced load capacity over +40 °C

Additional details:

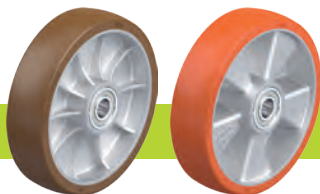
- wheel series: page 67
- tread: page 56
- bearing types: page 84–85
- chemical resistance: page 51

Wheels	Wheel Ø (D) [mm]	Wheel width (T2) [mm]	Load capacity at 4 km/h [kg]	Load capacity at 10 km/h [kg]	Load capacity at 16 km/h [kg]	Bearing type	Axle bore Ø (d) [mm]	Hub length (T1) [mm]
ALB 101/15K *	100	40	400	–	–	ball bearing	15	40
ALB 125/15K	125	40	550	–	–	ball bearing	15	45
ALB 150/20K	150	50	650	320	240	ball bearing	20	60
ALB 152/20K *	150	54	900	450	310	ball bearing	20	60
ALB 160/20K	160	50	750	370	280	ball bearing	20	60
ALB 162/20K *	160	50	950	470	330	ball bearing	20	60
ALB 181/20K	180	44	650	320	240	ball bearing	20	44
ALB 200/20K	200	50	800	400	300	ball bearing	20	60
ALB 202/20K *	200	50	1,000	500	350	ball bearing	20	60
ALB 250/25K	250	60	1,000	500	350	ball bearing	25	70
ALB 252/25K *	250	60	1,250	620	430	ball bearing	25	70

* With heavy-duty wheel centre, reinforced design

5

Versions / options



version with heavy duty wheel centre, reinforced design

other shore hardnesses and special colours

Technical description page

Product code suffix

Available for

upon request

ball bearing reinforced design

