

SETH series

Heavy-duty wheels
with **Blickle Extrathane®** polyurethane tread,
with **welded steel wheel centre**

500–1,350 kg

Tread and tyre hardness



92 Shore A

Smooth operation / floor preservation



good

Rolling resistance

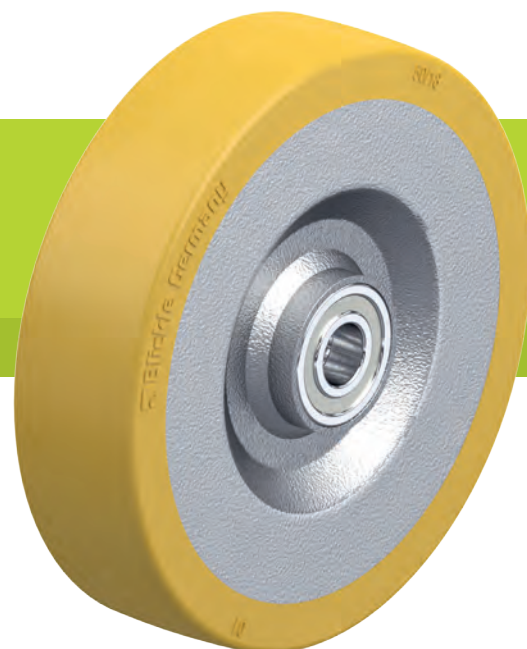


very good

Wear resistance



excellent



Tread:

- high-quality polyurethane elastomer Blickle Extrathane®, hardness 92 Shore A
- low rolling resistance
- high abrasion resistance
- high cut and tear propagation resistance
- colour light brown, non-marking, non-staining
- excellent chemical connection with the wheel centre

Wheel centre:

- thick-walled pressed steel, triple welded
- with welded tubular steel hub
- resistant to dirt, impact and shocks
- lacquered, colour silver

Other features:

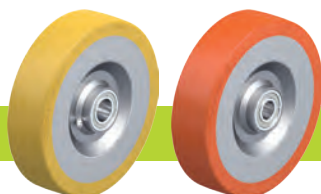
- high chemical resistance to many aggressive substances
- operating temperature: -20 °C to +70 °C, temporarily up to +90 °C, reduced load capacity over +40 °C

Additional details:

- wheel series: page 66
- tread: page 55
- bearing types: page 84–85
- chemical resistance: page 51

Wheels	Wheel Ø (D) [mm]	Wheel width (T2) [mm]	Load capacity at 4 km/h [kg]	Load capacity at 10 km/h [kg]	Bearing type	Axle bore Ø (d) [mm]	Hub length (T1) [mm]
SETH 125/20K	125	50	500	250	ball bearing	20	60
SETH 150/20K	150	50	650	320	ball bearing	20	60
SETH 150/25K	150	50	650	320	ball bearing	25	60
SETH 160/20K	160	50	700	350	ball bearing	20	60
SETH 160/25K	160	50	700	350	ball bearing	25	60
SETH 200/20K	200	50	1,000	500	ball bearing	20	60
SETH 200/25K	200	50	1,000	500	ball bearing	25	60
SETH 250/25K	250	60	1,350	670	ball bearing	25	70

Versions / options



with grease nipple

other shore hardnesses
and special colours

Technical description page

Product code suffix

-NI

Available for

upon request

upon request

