

LE-PATH, B-PATH series

**Pressed steel castors with top plate,
wheel with thermoplastic
polyurethane tread**



150–300 kg

Bracket: LE/B series

- pressed steel, zinc-plated, blue-passivated, Cr6-free

Swivel bracket:

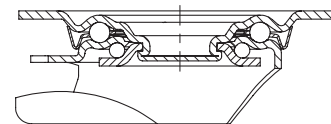
- double ball bearing in the swivel head
- swivel head seal
- minimum swivel head play and smooth rolling characteristic and increased service life due to the special dynamic Blickle riveting process

Wheel: PATH series

- tread: high-quality thermoplastic polyurethane (TPU), hardness 94 Shore A, colour dark grey, non-marking, non-staining
- wheel centre: high-quality nylon 6, impact resistant, colour silver grey

Additional details:

- bracket series: page 90
- brakes: page 112–113
- wheel series: page 258
- bearing types: page 84–85

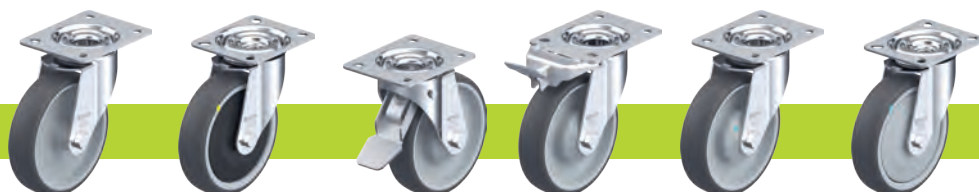


5

Swivel castors	Fixed castors	Swivel castors with "stop-fix" brake	Wheel Ø [mm]	Wheel width [mm]	Load capacity [kg]	Bearing type	Total height [mm]	Plate size [mm]	Bolt hole spacing [mm]	Bolt hole Ø [mm]	Offset swivel castor [mm]
LE-PATH 80G	B-PATH 80G	LE-PATH 80G-FI	80	32	150	plain bore	102	100 x 85	80 x 60	9	38
LE-PATH 80KF	B-PATH 80KF	LE-PATH 80KF-FI	80	32	150	ball bearing (C)	102	100 x 85	80 x 60	9	38
LE-PATH 100G	B-PATH 100G	LE-PATH 100G-FI	100	32	150	plain bore	125	100 x 85	80 x 60	9	36
LE-PATH 100KF	B-PATH 100KF	LE-PATH 100KF-FI	100	32	150	ball bearing (C)	125	100 x 85	80 x 60	9	36
LE-PATH 125G	B-PATH 125G	LE-PATH 125G-FI	125	32	150	plain bore	150	100 x 85	80 x 60	9	38
LE-PATH 125KF	B-PATH 125KF	LE-PATH 125KF-FI	125	32	150	ball bearing (C)	150	100 x 85	80 x 60	9	38
LE-PATH 160G	B-PATH 160G	LE-PATH 160G-FI	160	40	300	plain bore	195	140 x 110	105 x 75–80	11	54
LE-PATH 160R	B-PATH 160R	LE-PATH 160R-FI	160	40	300	roller bearing	195	140 x 110	105 x 75–80	11	54
LE-PATH 160KA	B-PATH 160KA	LE-PATH 160KA-FI	160	40	300	ball bearing (C)	195	140 x 110	105 x 75–80	11	54
LE-PATH 200G	B-PATH 200G	LE-PATH 200G-FI	200	40	300	plain bore	235	140 x 110	105 x 75–80	11	54
LE-PATH 200R	B-PATH 200R	LE-PATH 200R-FI	200	40	300	roller bearing	235	140 x 110	105 x 75–80	11	54
LE-PATH 200KA	B-PATH 200KA	LE-PATH 200KA-FI	200	40	300	ball bearing (C)	235	140 x 110	105 x 75–80	11	54

For stainless steel versions, see page 407

Versions / options



	plain bore version	electrically conductive version, non-marking grey	with "stop-top" brake	directional lock (separate) 1 x 360°	small thread guard with additional ball bearing seal	large thread guard with additional ball bearing seals
Technical description page		50	112	115	85	85
Product code suffix		-ELS	-ST	RI-03.01 / RI-03.03	-KAD	-KFD
Available for		all ball bearing versions*	wheel Ø 160–200 mm	RI-03.01: Ø 100–125 RI-03.03: Ø 160–200 **	upon request	upon request

* Wheel load capacity of electrically conductive version reduced by 35%

** Only for swivel castors without brake or swivel castor with "stop-top" brake upon request