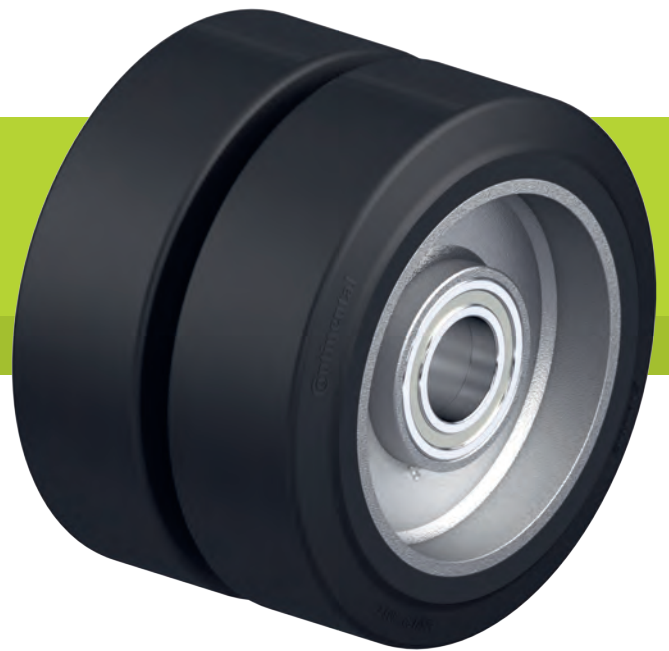


## DS series

Heavy-duty twin wheels with elastic solid rubber tyres, with welded steel wheel centre, heavy-duty version



1,800–4,580 kg

**Tread and tyre hardness**



65 Shore A

**Smooth operation / floor preservation**



very good

**Rolling resistance**



very good

**Wear resistance**



good

3

**Tyre:**

- high-quality elastic solid rubber in smooth rolling quality, steel-wire reinforced, hardness 65 Shore A
- very good operational comfort
- very good floor preservation, low-noise operation
- low rolling resistance
- colour black

**Wheel centre:**

- very strong welded steel construction
- with twice-welded tubular steel hub
- with grease nipple
- lacquered, colour anthracite

**Other features:**

- chemical resistance to many aggressive substances, except oils
- operating temperature: -20 °C to +80 °C, temporarily up to +100 °C, reduced load capacity over +60 °C

**Additional details:**

- wheel series: page 64
- tread: page 53
- bearing types: page 84–85
- chemical resistance: page 51

Wheels	Wheel Ø	Wheel width	Load capacity at 4 km/h	Load capacity at 10 km/h	Load capacity at 16 km/h	Bearing type	Axle bore Ø	Hub length
	(D) [mm]	(T2) [mm]	[kg]	[kg]	[kg]		(d) [mm]	(T1) [mm]
<b>DS 300/50K</b>	300	2 x 75	1,800	1,200	900	ball bearing	50	150
<b>DS 361/50K</b>	360	2 x 75	2,280	1,520	1,140	ball bearing	50	150
<b>DS 400/55K</b>	400	2 x 75	2,400	1,600	1,200	ball bearing	55	150
<b>DS 405/75K</b>	405	2 x 130	3,600	2,400	1,800	ball bearing	75	250
<b>DS 425/80K</b>	425	2 x 150	4,580	3,040	2,860	ball bearing	80	250
<b>DS 500/60K</b>	500	2 x 85	3,120	2,100	1,560	ball bearing	60	170

Other dimensions available upon request

### Versions / options



wheel with hub cap (end wheel)	drive wheel with hub keyway
--------------------------------	-----------------------------

Technical description page	117	
Product code suffix	-E	DSN series
Available for	upon request	upon request

