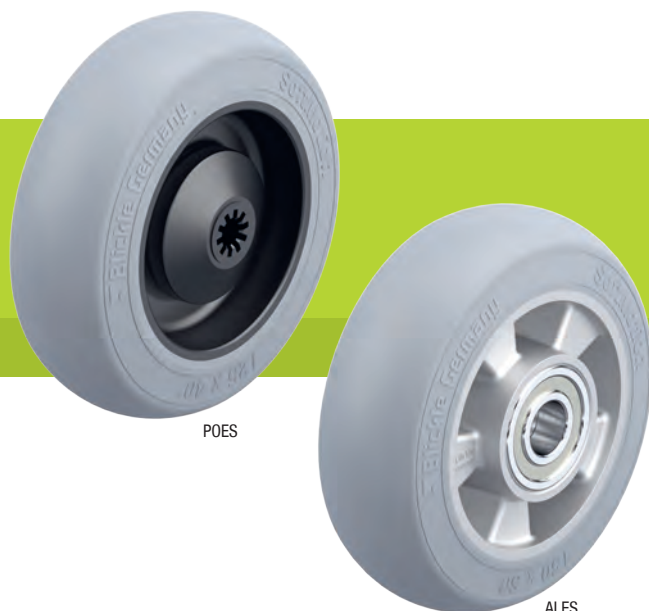


POES, ALES series

Wheels with “Blickle SoftMotion” soft rubber tyres, with nylon or aluminium wheel centre



110–440 kg

Tread and tyre hardness	55 Shore A
Smooth operation / floor preservation	excellent
Rolling resistance	very good
Wear resistance	good



Tyre:

- high-quality elastic solid rubber “Blickle SoftMotion”, hardness 55 Shore A
- maximum operational comfort
- excellent floor preservation, particularly quiet operation
- low rolling resistance
- colour grey, non-marking
- vulcanised onto the wheel centre

Wheel centre:

- POES series: high-quality nylon 6, impact resistant, colour black
- series ALES: die-cast aluminium

Other features:

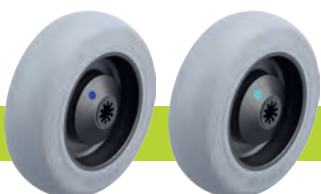
- KA version: with synthetic thread guard, small
- KF version: with synthetic thread guard, large
- high chemical resistance to many aggressive substances, except oils
- operating temperature: -20 °C to +80 °C, reduced load capacity over +35 °C (POES) or +60 °C (ALES)

Additional details:

- wheel series: page 60
- tread: page 53
- bearing types: page 84–85
- chemical resistance: page 51

Wheels	Wheel Ø (D) [mm]	Wheel width (T2) [mm]	Load capacity at 4 km/h [kg]	Load capacity at 10 km/h [kg]	Bearing type	Axle bore Ø (d) [mm]	Hub length (T1) [mm]
POES							
POES 80/8KF-SG	80	40	110	–	ball bearing (C)	8	46
POES 100/8KF-SG	100	40	150	–	ball bearing (C)	8	46
POES 125/8KA-SG	125	40	175	–	ball bearing (C)	8	46
POES 150/12KA-SG	150	50	280	–	ball bearing (CC)	12	60
POES 160/12KA-SG	160	50	300	–	ball bearing (CC)	12	60
POES 200/12KA-SG	200	50	350	–	ball bearing (CC)	12	60
ALES							
ALES 150/20K-SG	150	50	280	220	ball bearing	20	60
ALES 160/20K-SG	160	50	300	240	ball bearing	20	60
ALES 200/20K-SG	200	50	350	280	ball bearing	20	60
ALES 250/20K-SG	250	50	440	370	ball bearing	20	60

Versions / options



	with stainless steel ball bearing and thread guard	thread guard with additional ball bearing seals
Technical description page	84–85	85
Product code suffix	-XKA / -XKF	-KAD / -KFD
Available for	POES series	upon request

