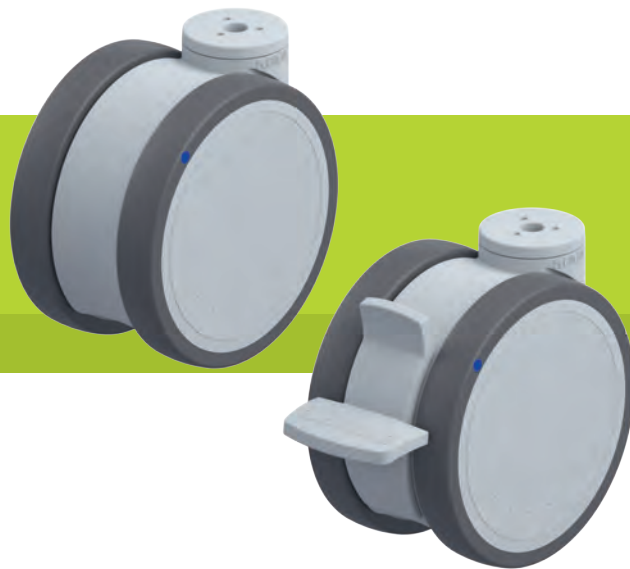


## LKDGX-PATH series

**Blickle MOVE twin synthetic castors, corrosion-resistant, with bolt hole, colour silver grey, wheel with thermoplastic polyurethane tread**



100–125 kg

-20 °C to +60 °C

**Bracket:** LKDGX series

- high-quality nylon 6, impact resistant
- two corrosion-resistant grooved ball bearings in swivel head sealed on both sides
- bolt hole
- colour silver grey RAL 7001
- all parts including axle material are corrosion-resistant
- modern, appealing design

**Wheel:** PATH series

- tread: high-quality thermoplastic polyurethane (TPU), hardness 94 Shore A, colour dark grey, non-marking, non-staining
- wheel centre: high-quality nylon 6, impact resistant, colour silver grey RAL 7001

**Other features:**

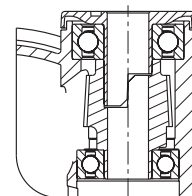
- the load capacity reduces at ambient temperatures above +30 °C

**Additional details:**

- bracket series: page 90
- brakes: page 112–113
- wheel series: page 61
- bearing types: page 84–85



2



Swivel castors	Swivel castors with "stop-fix" brake	Wheel Ø [mm]	Wheel width [mm]	Total castor width [mm]	Load capacity [kg]	Bearing type	Total height [mm]	Plate Ø [mm]	Bolt hole Ø [mm]	Offset swivel castor [mm]
LKDGX-PATH 100XK	LKDGX-PATH 100XK-FI	100	2 x 18	80	100	ball bearing	103	42	13	31
LKDGX-PATH 100XK-11	LKDGX-PATH 100XK-11-FI	100	2 x 18	80	100	ball bearing	103	42	11	31
LKDGX-PATH 100XK-9	LKDGX-PATH 100XK-9-FI	100	2 x 18	80	100	ball bearing	103	42	9	31
LKDGX-PATH 125XK	LKDGX-PATH 125XK-FI	125	2 x 20	80	125	ball bearing	130	42	13	40
LKDGX-PATH 125XK-11	LKDGX-PATH 125XK-11-FI	125	2 x 20	80	125	ball bearing	130	42	11	40

Swivel castor with "stop-fix" brake with easy release kick lever as standard

### Versions / options \*



	electrically conductive version, non-marking	with combined wheel brake and directional lock (1 x 360°)	castor with special mounting height 121 / 135 mm	with threaded pin made from stainless steel M10 x 20 M12 x 20	wheel Ø 150 mm	with stainless steel top plate fitting	in special colour
Technical description page	50	115		104		106	
Product code suffix	-ELS	-RIFI	LKDGXH-...	-GSX10 / -GSX12	-RIFI	-PX25 / -PX26	
Available for	all	wheel Ø 125 mm	wheel Ø 100 / 125 mm	all with bolt hole Ø 13 mm	upon request	upon request	upon request

\* Other versions / options: expander fitting for all castors with bolt hole Ø 11 mm upon request (with exception of LKDGXH version), total height +5 mm, see page 180