

LPA-VSTH, LKPA-VSTH series

Light duty castors with top plate,
wheel with Blickle Extrathane®
polyurethane tread



100–150 kg

Bracket: LPA/LKPA series

- pressed steel, zinc-plated, blue-passivated, Cr6-free
- double ball bearing in the swivel head
- strong central kingpin
- minimum swivel head play and smooth rolling characteristic and increased service life due to the special dynamic Blickle riveting process

Wheel: VSTH series

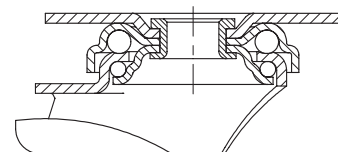
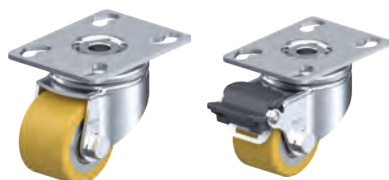
- tread: high-quality polyurethane elastomer Blickle Extrathane®, hardness 92 Shore A, colour light brown, non-marking, non-staining
- wheel centre: steel

Additional details:

- bracket series: page 86
- brakes: page 112–113
- wheel series: page 66
- bearing types: page 84–85



1



Swivel castors	Swivel castors with "Radstop" brake	Wheel Ø [mm]	Wheel width [mm]	Load capacity [kg]	Bearing type	Total height [mm]	Plate size [mm]	Bolt hole spacing [mm]	Bolt hole Ø [mm]	Offset swivel castor [mm]
LPA-VSTH 35K	LPA-VSTH 35K-RA	35	27	100	ball bearing	52	60 x 60	38 x 38 / 48 x 48	6.2	15
LKPA-VSTH 50K	LKPA-VSTH 50K-RA	50	33	150	ball bearing	73	90 x 66	75 x 45 / 61 x 51	8.5	29

For additional castors with a high load capacity and low total height, see the "Compact castors" section