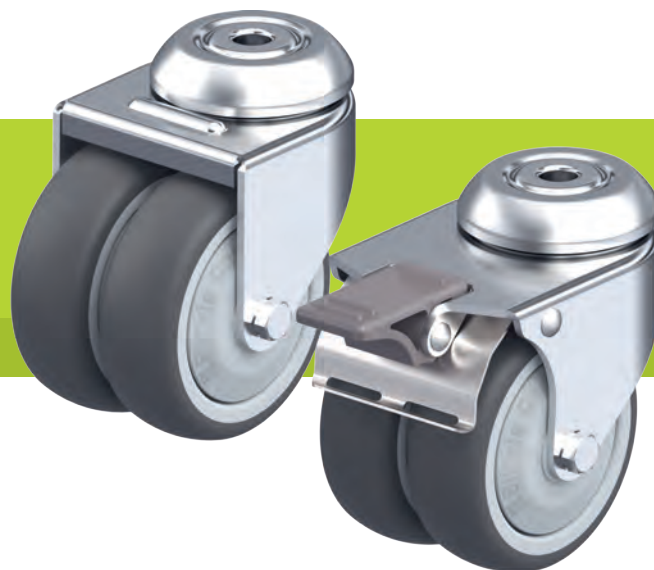


## LMDA-PATH series

### Twin wheel light duty castors with bolt hole, wheel with thermoplastic polyurethane tread



1

80–100 kg

**Bracket:** LMDA series

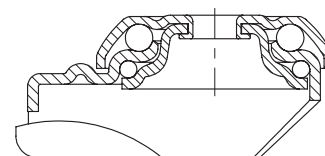
- pressed steel, zinc-plated, blue-passivated, Cr6-free
- double ball bearing in the swivel head
- pressed swivel head

**Wheel:** PATH series

- tread: high-quality thermoplastic polyurethane (TPU), hardness 94 Shore A, colour dark grey, non-marking, non-staining
- wheel centre: high-quality nylon 6, impact resistant, colour silver grey

**Additional details:**

- bracket series: page 86
- brakes: page 112–113
- wheel series: page 136
- bearing types: page 84–85



Swivel castors	Swivel castors with "stop-fix" brake	Wheel Ø [mm]	Wheel width [mm]	Load capacity [kg]	Bearing type	Total height [mm]	Plate Ø [mm]	Bolt hole Ø [mm]	Offset swivel castor [mm]
LMDA-PATH 50G	LMDA-PATH 50G-FI	50	2 x 19	80	plain bore	71	41	10.2	31
LMDA-PATH 50KF	LMDA-PATH 50KF-FI	50	2 x 19	80	ball bearing (C)	71	41	10.2	31
LMDA-PATH 75G	LMDA-PATH 75G-FI	75	2 x 25	100	plain bore	98	55	10.2	34
LMDA-PATH 75KF	LMDA-PATH 75KF-FI	75	2 x 25	100	ball bearing (C)	98	55	10.2	34

### Versions / options



	plain bore version	electrically conductive version, non-marking grey
Technical description page		50
<b>Product code suffix</b>		<b>-ELS</b>
Available for		all ball bearing versions*

\* Wheel load capacity of electrically conductive version reduced by 35%