

LDA-VPA series

Twin wheel light duty castors with top plate, wheels with solid rubber tyres

80–100 kg

Bracket: LDA series

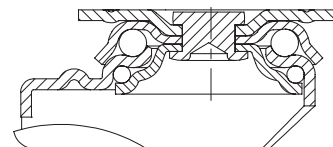
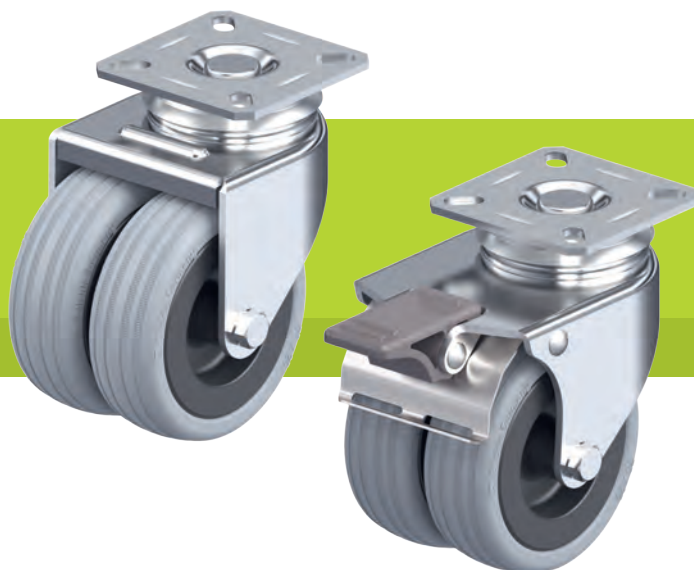
- pressed steel, zinc-plated, blue-passivated, Cr6-free
- double ball bearing in the swivel head
- pressed swivel head

Wheel: VPA series

- tyre: high-quality solid rubber, hardness 80 Shore A, colour grey, non-marking, non-staining
- rim: high-quality nylon 6 or polypropylene in the electrically conductive version “-EL”, impact resistant, colour black

Additional details:

- bracket series: page 86
- brakes: page 112–113
- wheel series: page 127
- bearing types: page 84–85



Swivel castors	Swivel castors with “stop-fix” brake	Wheel Ø [mm]	Tyre width [mm]	Load capacity [kg]	Bearing type	Total height [mm]	Plate size [mm]	Bolt hole spacing [mm]	Bolt hole Ø [mm]	Offset swivel castor [mm]
LDA-VPA 50G	LDA-VPA 50G-FI	50	2 x 18	80	plain bore	71	60 x 60	38 x 38 / 48 x 48	6.2	31
LDA-VPA 50K	LDA-VPA 50K-FI	50	2 x 18	80	ball bearing	71	60 x 60	38 x 38 / 48 x 48	6.2	31
LDA-VPA 75G	LDA-VPA 75G-FI	75	2 x 25	100	plain bore	101	60 x 60	40 x 40 / 46 x 46	6.2	34
LDA-VPA 75K	LDA-VPA 75K-FI	75	2 x 25	100	ball bearing	101	60 x 60	40 x 40 / 46 x 46	6.2	34

Versions / options



	electrically conductive version, black tyre
Technical description page	50
Product code suffix	-EL
Available for	all ball bearing versions*

* Wheel load capacity of electrically conductive version reduced by 25%