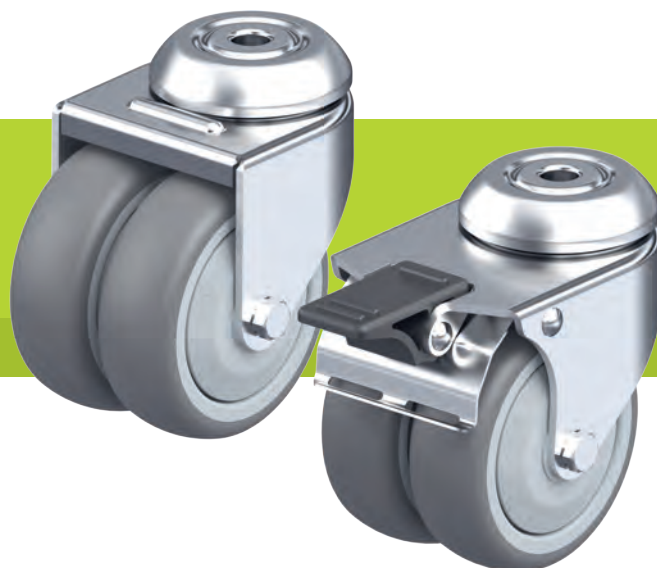


LMDA-TPA series

Twin wheel light duty castors with bolt hole, wheels with thermoplastic rubber tread



1

80–100 kg

Bracket: LMDA series

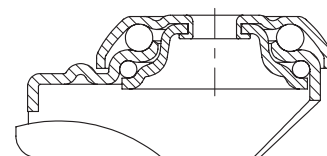
- pressed steel, zinc-plated, blue-passivated, Cr6-free
- double ball bearing in the swivel head
- pressed swivel head

Wheel: TPA series

- tread: high-quality thermoplastic rubber-elastomer (TPE), hardness 85 Shore A, colour grey, non-marking, oil containing
- wheel centre: high-quality polypropylene, impact resistant, colour silver grey ("ELS" version colour black)

Additional details:

- bracket series: page 86
- brakes: page 112–113
- wheel series: page 122
- bearing types: page 84–85



| Swivel castors | Swivel castors with "stop-fix" brake | Wheel Ø [mm] | Wheel width [mm] | Load capacity [kg] | Bearing type | Total height [mm] | Plate Ø [mm] | Bolt hole Ø [mm] | Offset swivel castor [mm] |
|----------------|--------------------------------------|-----------------|---------------------|-----------------------|------------------|----------------------|-----------------|---------------------|------------------------------|
| LMDA-TPA 50G | LMDA-TPA 50G-FI | 50 | 2 x 19 | 80 | plain bore | 71 | 41 | 10.2 | 31 |
| LMDA-TPA 50KF | LMDA-TPA 50KF-FI | 50 | 2 x 19 | 80 | ball bearing (C) | 71 | 41 | 10.2 | 31 |
| LMDA-TPA 75G | LMDA-TPA 75G-FI | 75 | 2 x 25 | 100 | plain bore | 98 | 55 | 10.2 | 34 |
| LMDA-TPA 75KF | LMDA-TPA 75KF-FI | 75 | 2 x 25 | 100 | ball bearing (C) | 98 | 55 | 10.2 | 34 |

Versions / options



| | | |
|----------------------------|--------------------|---|
| | plain bore version | electrically conductive version, non-marking grey |
| Technical description page | | 50 |
| Product code suffix | | -ELS |
| Available for | | all* |

* Wheel load capacity of electrically conductive version reduced by 35%